



Overview of Visualization at Rockwell Automation

Tomas Knobloch

Solution Architect Visualization,
Process, SW

PUBLIC

 *Allen-Bradley • Rockwell Software*

**Rockwell
Automation**

A View for Every Manufacturing Scenario

Rockwell
Automation

VISUALIZATION PORTFOLIO

FactoryTalk® View Machine Edition Studio 5000® View Designer

Machine-Level HMI

- PanelView Plus 6
- PanelView Plus 7
- PanelView 5000



FactoryTalk® View Site Edition

Scalable PC Based HMI

- Industrial Computers
- Non-Industrial Computers
- Monitors



FactoryTalk® ViewPoint

Web-Based HMI

- Add-on for Machine Edition and Site Edition
- Access HMI screens from a web browser



Visualization Hardware

Portfolio Overview and Positioning

**Rockwell
Automation**

Increasing features & performance

PanelView™ 800

- Optimized for compatibility with Micro800® and MicroLogix™ controller
- Design and configure with CCW
- Panel-mount display devices
- Connectivity to L1 controllers

PanelView™ Plus 7 Standard



MobileView

- Runs FactoryTalk® View Studio Machine Edition software
- Closed-platform provides a robust machine interface
- Ethernet communication
- Mobile Enabled

PanelView™ Plus 7 Performance



PanelView™ 5500 (future state position)



- Runs Studio 5000® for enhanced integration with Logix
- Reduced development time
 - Scalable vector graphics
 - Advanced animation
 - Logix based alarms
- Ethernet communication

Industrial Computers



- Runs FactoryTalk® View Site Edition Software
- Open-platform flexibility of the Windows® operating system
- Industrial and extreme environment options available



LISTEN.
THINK.
SOLVE.®

PanelView Plus 7

Family Overview

PUBLIC

 Allen-Bradley • Rockwell Software

**Rockwell
Automation**

PanelView Generations

**Rockwell
Automation**



Since 1989

The newest addition to the family: PanelView Plus 7

PanelView Plus 7

Overview

**Rockwell
Automation**

Extends hardware offering

- Increases scalability
 - PanelView Plus 7 **standard** family
 - PanelView Plus 7 **performance** family
- New Displays
 - **Increased Screen resolution**
 - **Wide Screens**
 - **More Sizes: 4" wide up to 19"**
- More Certifications
 - **ATEX, Marine**
- **DLR** (embedded switch)
- FactoryTalk View Machine Edition

*Better Hardware...
Easy Migration...*



PanelView Plus 7 Standard

Anatomy

**Rockwell
Automation**



*Customization-
ready Bezel*

*ATEX II 3G/D and UL
Class 1, Div 2 for
demanding
environments (zone
2 & zone 22)*



*Remote access via
VNC and
FactoryTalk
Viewpoint*

With the embedded PDF Viewer, show:

- *User Manuals*
- *Installation Manuals*
- *SOPs (Standard Operating Procedures)*

*Faceplates and Add-on Instructions can
save 50 - 90% of complex screen
development time*

PanelView Plus 7 Standard

**Rockwell
Automation**

Anatomy

SD storage card slot for data storage and terminal replication



New installation clamps provide fast and simple terminal installation and removal



USB Ports for quick upload and download to the terminal



Low profile bezel with high quality IP66 sealing



Embedded Ethernet port for connectivity from the machine to the enterprise



PanelView Plus 7 Standard

Optimized for Midrange applications

**Rockwell
Automation**

- Optimized for Midrange applications
 - Processor / Memory
 - Construction Material

~~Application Limitations:~~

- ~~• 25 Screens~~
- ~~• 1 controller connection~~
- ~~• 200 Alarms~~

New Application Limitations (FTView V9.0):

- 50 Screens (25 Replace+25 OnTop)**
- 1 controller connection**
- 500 Alarms**

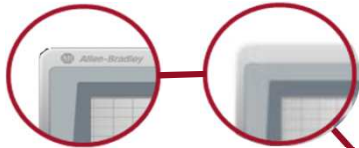
- 4.3"W, 5.7", 6.5", 9"W, 10.4", 12"W, 15"
- Low profile composite bezel
- Resistive touch screen
- **Single Ethernet Only**
- ARM processor
- 512 MB Flash Memory / 512 MB RAM
- VNC(client & server), FTP, FTViewPoint, recipe management, Data logging, email notification, secure user management
- **DC** powered
- **ATEX II 3G/D certificate. Usage in Haz locations Zone 2 & Zone 22 allowed !**

PanelView Plus 7 Performance

**Rockwell
Automation**

Anatomy

*Customization-
ready Bezel*



*Widescreen, keypad
and touchscreen
options*

*Advanced
Capabilities*

- *Video playback*
- *Integrated web browser*
- *Thin Client mode included*



*Remote access via
VNC and FactoryTalk
Viewpoint*

With the embedded PDF Viewer, show:

- *User Manuals*
- *Installation Manuals*
- *SOPs (Standard Operating Procedures)*

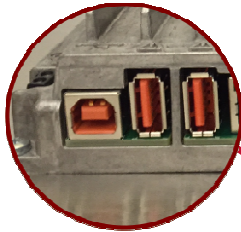
*Faceplates and Add-on Instructions
can save 50 - 90% of complex screen
development time*

PanelView Plus 7 Performance

**Rockwell
Automation**

Anatomy

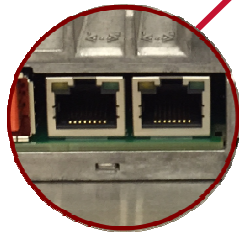
*USB Ports for
quick upload and
download to
the terminal*



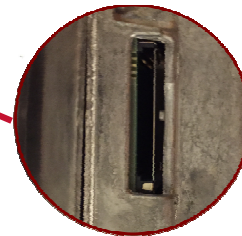
*New installation clamps
provide fast and simple
terminal installation
and removal*



*Embedded dual
Ethernet port
with DLR
connectivity*



*SD storage card
slot for data
storage and
terminal
replication*



PanelView Plus 7 Performance

For Demanding Industries

**Rockwell
Automation**

- Ideal for Variety of Industries

Examples:

- Process
- Metals
- Mining / Aggregate
- Marine
- Tire and Rubber

- Complex Applications

Example:

- 300 Screens
- 3,000 Tags
- 400 Alarms

- 6.5", 9"W, 10.4", 12"W, 15", 19"
- Low profile painted aluminum bezel
- Resistive touch with keypad options
- Ethernet with embedded **switch (DLR)**
- **X86 processor**
- **1 GB** Flash Memory / 512 MB RAM
- VNC (client & server), FTP, FTViewPoint, recipe management, Data logging, email notification, secure user management
- Web browser, RDP client, Office browsers, MS Media player
- **DC and AC power options**
- ATEX (zone 2/22) & Marine Certification

LISTEN.
THINK.
SOLVE.®

PanelView Plus 7 Performance Stainless Steel | Hygienic

PUBLIC

 *Allen-Bradley • Rockwell Software*

**Rockwell
Automation**

PanelView Plus 7 Performance Stainless Steel

High Level Product Features

**Rockwell
Automation**



- Target industries: Food and Beverage
- Display size : 9 inch wide, 12 inch wide
- Stainless Steel 304 bezel
- Dedicated bezel and gasket design : Easy Installation
- Conformal Coated (ISA 71.04 G3)
- Blue, food-grade silicon gasket, replaceable
- Ingress protection: IP66, NEMA 4X
- CE, UL, FDA 21 CFR 177.2600

PanelView Plus 7 Performance Stainless Steel | Hygienic

**Rockwell
Automation**

Catalog Numbers	Description
2711P-T9W22D9P-BSHK	PanelView Plus 7 Performance, 9 in. wide, Stainless Steel Hygienic, Conformally Coated, Brandless
2711P-T12W22D9P-BSHK	PanelView Plus 7 Performance, 12 in. wide, Stainless Steel Hygienic, Conformally Coated, Brandless
2711P-RGST9W	Gasket, Silicone, 9 in. wide, for use with Stainless Steel Hygienic
2711P-RGST12W	Gasket, Silicone, 12 in. wide, for use with Stainless Steel Hygienic

Part numbers Available in SAP – EMEA stock building up.

Software and Firmware

- PanelView Plus 7 Performance Stainless Steel is identical to the PanelView Plus 7 Performance terminals
 - The same firmware will be used
 - Will still be programmed with FTView ME
 - Product selection will still be PanelView Plus 7 Performance 9in or 12in

Additional Notes

- Working with **NSF (USA) and EHEDG (EMEA)** certification agencies right now (potential future release)
- **IP69K ingress protection** under evaluation



Note: initial release is not ATEX/IECEX certified (potentially in future release)

PanelView Plus 7 Performance Stainless Steel

Release plan | Next steps

**Rockwell
Automation**



JULY-NOV 2017: Product AFC

- Focus on addressing early adopter needs
- Increase EMEA stock
- Focus on additional EHEDG & NSF certification

NOV 2017: EMEA Product launch

- All Public collaterals available
- EHEDG & NSF certification finalized
- Launch webinar
- Public launch : SPS/IPC/DRIVES, Nuremberg

LISTEN.
THINK.
SOLVE.®

MobileView



PUBLIC

 Allen-Bradley • Rockwell Software

**Rockwell
Automation**

MobileView Tethered Operator Terminal

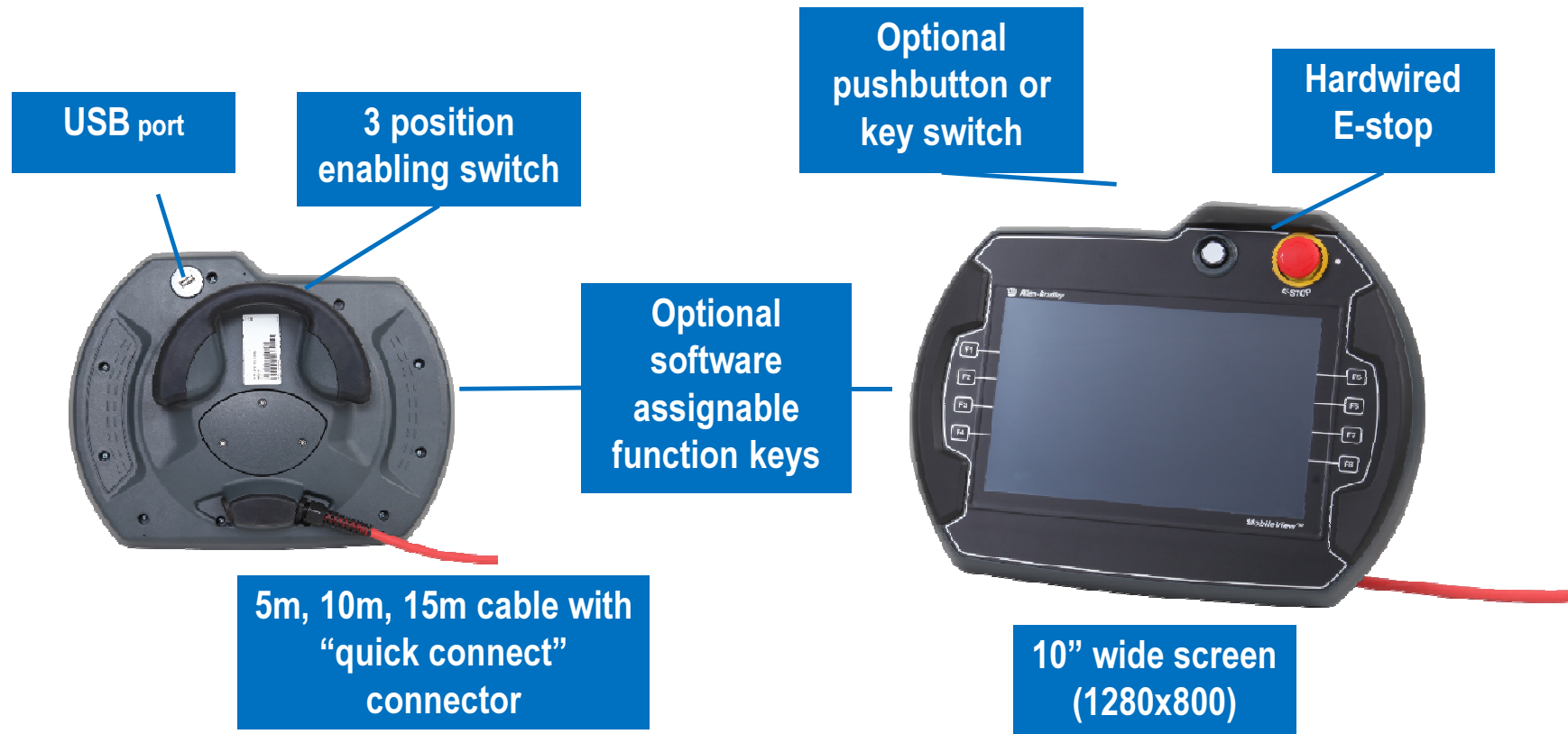
Rockwell
Automation



The MobileView Tethered Operator Terminal **expands the visualization portfolio by taking the terminal mobile** and improves productivity by eliminating the need for two operators for certain operations. With three cable length options and a hardwired E-STOP and 3-position enabling switches, the terminal helps contribute to a safe production environment.

MobileView Tethered Differentiators

**Rockwell
Automation**



MobileView – connections



LISTEN.
THINK.
SOLVE.®

MobileView 2nd Generation

September 2017

PUBLIC

 *Allen-Bradley • Rockwell Software*

**Rockwell
Automation**

MobileView 2nd Generation

- MobileView terminal with illuminated E-Stop
- Thin client option for use with ThinManager[®] software
- E-Stop illuminated red when E-Stop is active
- Three Cable lengths: 5 m, 10 m, 15 m
- Two new IP65 junction boxes with Box ID functionality
 - Optional On-Machine[™] connectors



Estimated AFC Early October 2017

LISTEN.
THINK.
SOLVE.®

PanelView™ 5500 and Studio 5000 View Designer®



PUBLIC

 Allen-Bradley • Rockwell Software

**Rockwell
Automation**



SCALABLE • HIGH RESOLUTION • WIDE-SCREEN FORMATS



*Sleek, Modern Design
Improved Performance
Enhanced Logix Integration*

PanelView 5500

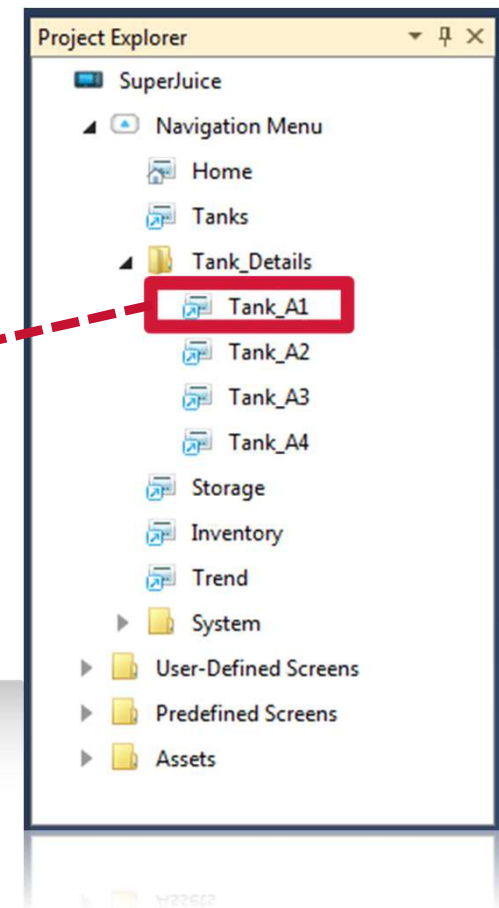
MODERN DESIGN

- 6.5", 9"W, 10.4", 12"W, 15", 19"
- Low profile aluminum bezel
- TFT color displays with light-emitting diode backlight
- Resistive touch screen with navigation button and keypad options
- Device Level Ring (DLR) Ethernet
- DC and AC power options



Increased Productivity

EASY NAVIGATION



Increased Productivity

INTUITIVE OPERATION

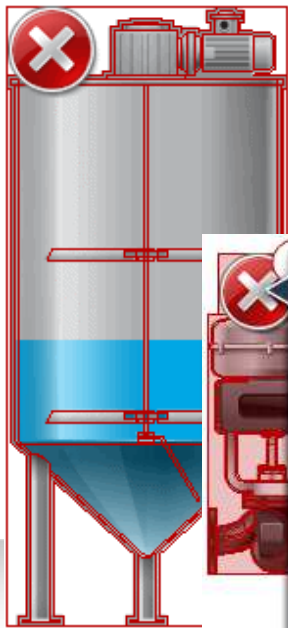


Default System Banner

- Notifications
- Alarms
- Screen navigation
- Active User
- Date/Time

Increased Productivity

ADVANCED DIAGNOSTICS



GlobeValve_001 Error

Read from ::L75.sfaoisefe [AB_ETH-1\10.88.32.184\Backplane\1] failed because the tag does not exist in the controller or it has the External Access property set to None.

Property: opacity
Tag: ::L75.sfaoisefe

Read from ::L75.boottagbla

1 / 2

Network

Network Diagnostics:
Ethernet link 1: Enabled: Yes Network status: Duplicate IP detected: No

Controllers

General:
Reference: MyController1
Path: 255.255.255.255\Backplane\3

HMI Device

Allow Downloads and Firmware Updates

HMI device name: ThisIsMyDevice01

Application name: ThisIsMyApplication01234567890123456789

Product Information:
Catalog: 2713-T6CD1
Firmware: 22.001

Diagnostics:

CPU utilization:	52%	Memory used (RAM):	8567 kB
Total power on time:	34 hours	Memory free (RAM):	40898 kB
CPU temperature:	42°C	Memory used (Flash):	3256 kB
Last reboot:	11/19/2012 07:31:46 AM	Memory free (Flash):	51245 kB
Last deploy:	07/10/2011 12:52:15 AM	Battery state:	GOOD

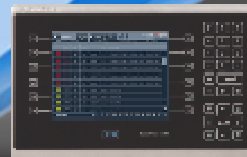
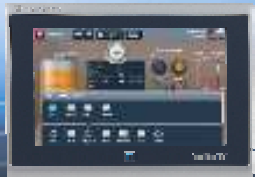
Reboot

Rockwell Software

Studio 5000

View Designer

Scalable vector graphics
Intuitive design environment
Optimized Logix integration





Project Explorer contains the structure of the project

Canvas area used for creating screens

Properties Pane helps configure elements

Searchable Toolbox of pre-built elements

Graphic Explorer displays graphic elements

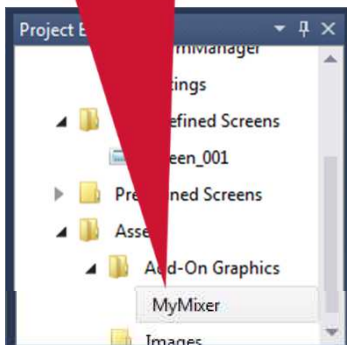
VIEW DESIGNER

Increased Productivity

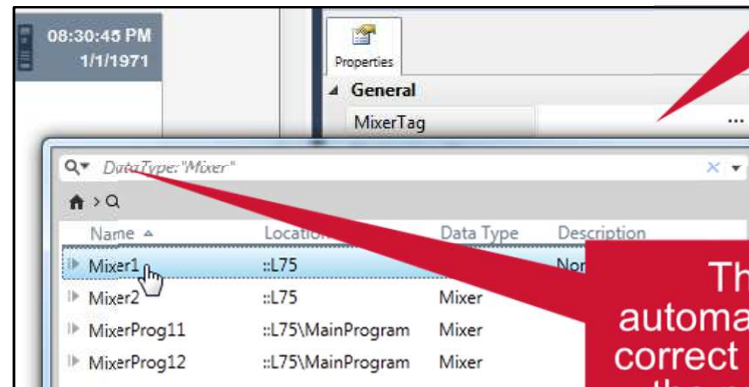
REUSABLE ADD-ON GRAPHICS

- Changes made to an AOG definition are propagated to all instances
- Create your own Toolbox graphic elements by combining existing elements
- Add-On Graphics (AOGs) can have custom properties linked to Logix data types
- AOGs reside in their own Add-On Graphics folder in the Toolbox
- Reuse AOGs within and across projects to save development time

Create AOGs under the Assets folder in Project Explorer

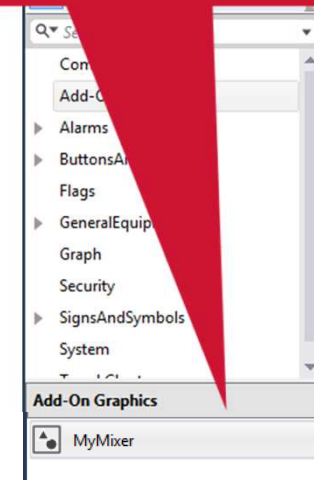


Bind the custom AOG property to a specific tag instance.



The tag browser automatically filters for the correct data type based on the property data type.

Drop an AOG instance on a screen by double-clicking or drag-drop out of the Toolbox just like any other element.



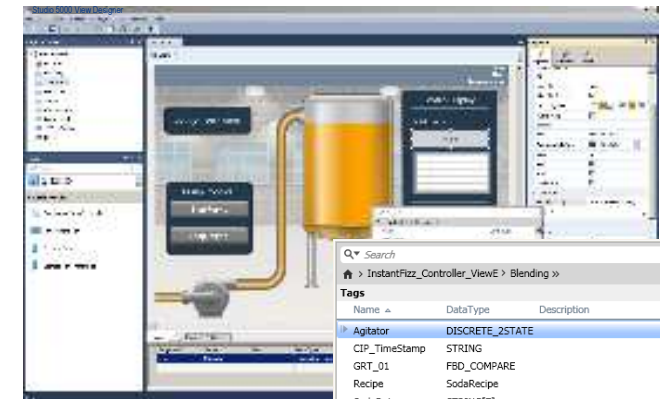
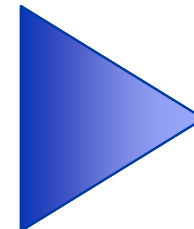
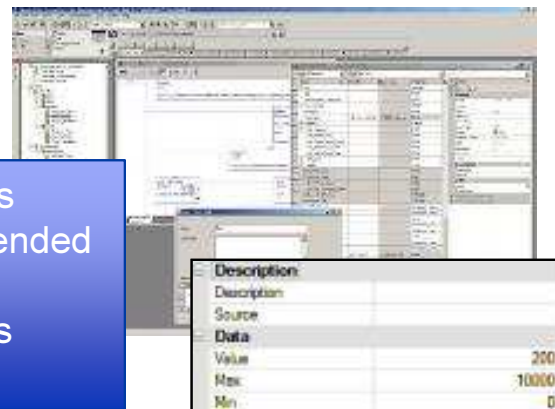
Increased Productivity

EXTENDED TAG PROPERTIES

Logix Designer

View Designer

- Tag Definitions (including extended properties)
- Alarm Settings
- Data Types

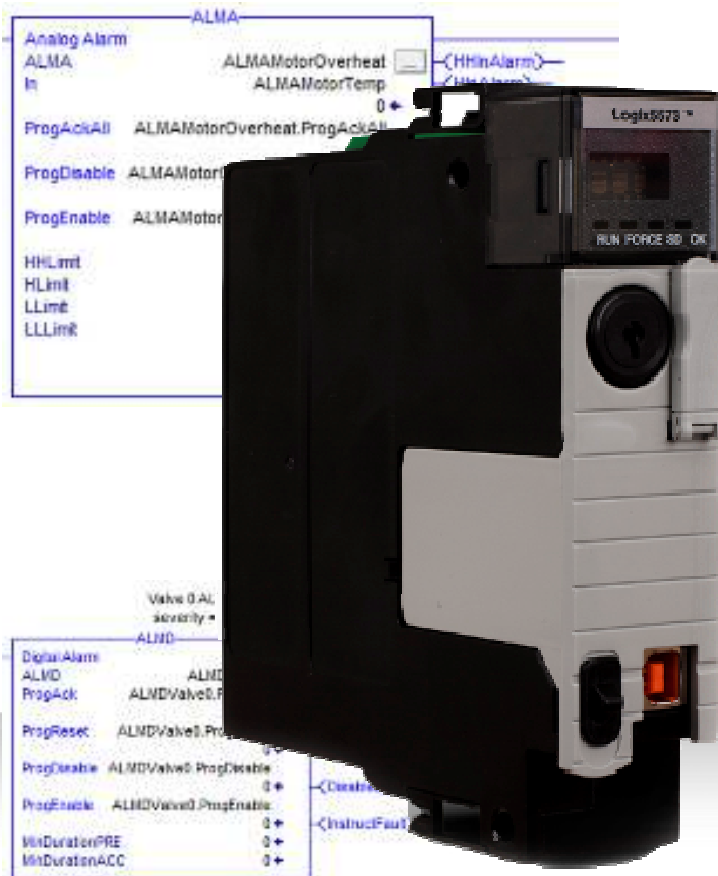


New Tag Browser Interface

- Saves development by eliminating redundant entry
- Studio 5000 View Designer browses controller tags separately
- User-defined, HMI graphic objects can be built and mapped to logical objects

Enhanced Integration

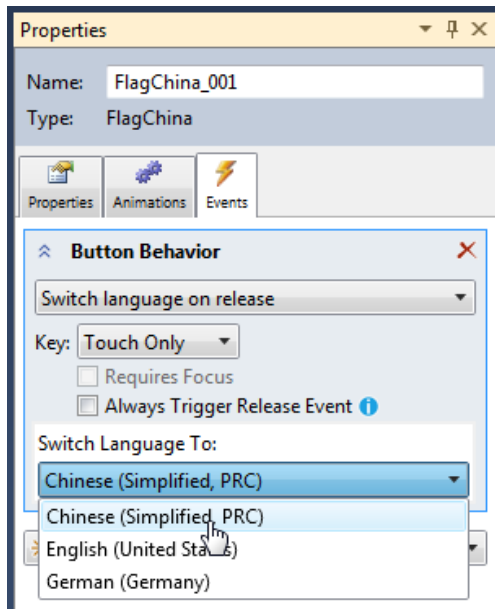
LOGIX BASED **ALARMS**



Enhanced Integration

LANGUAGE SWITCHING

- Use a language switch command to switch to any of the languages in the project.
- The language switch will also switch the language strings from the Logix controller including extended tag properties and alarm messages.



Press a button with the language switch command to change languages at runtime.



Studio 5000 V27 and higher

**Rockwell
Automation**

Logix & View Integrated Design Environment

Logix Designer

Programming and configuration for Logix controllers.

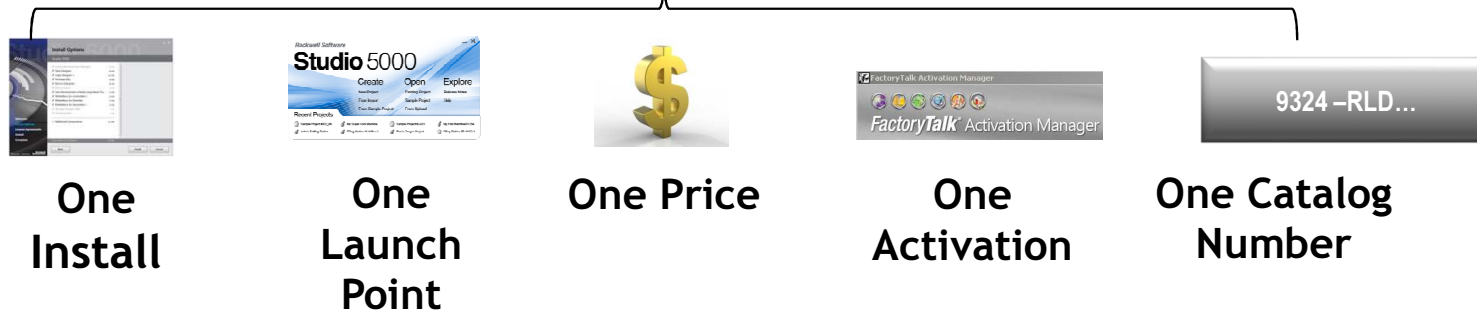


View Designer

Graphical design environment for View 5000 HMIs.

New User Interface.

One Product





PanelView 5310 & ViewDesigner V4.0

September 2017

PUBLIC

 *Allen-Bradley • Rockwell Software*

**Rockwell
Automation**

View Designer and PanelView5000 V4

Planned Features

**Rockwell
Automation**

- New PV5310 hardware
 - Lower cost panel in 6", 7"W, 9"W, and 12"W sizes.
 - Supports up to 50 screens and popups.
- HMI features:
 - PV5500 : 100 screens / "4 Terminal - 1 Controller" Support
 - Data logging and historical trending
 - Emulator
 - PDF viewer
 - VNC support
 - Download from removable media / Slider graphic element / Simple line tool / Enhanced "Find" tool

Estimated AFC: December 2017

PanelView™ 5310 Overview

**Rockwell
Automation**



- Delivers the same enhanced Logix integration and usability as the PanelView™ 5500 using Studio 5000 View Designer®
- Designed for smaller applications where extended operating temperatures and hazardous location certifications are not required

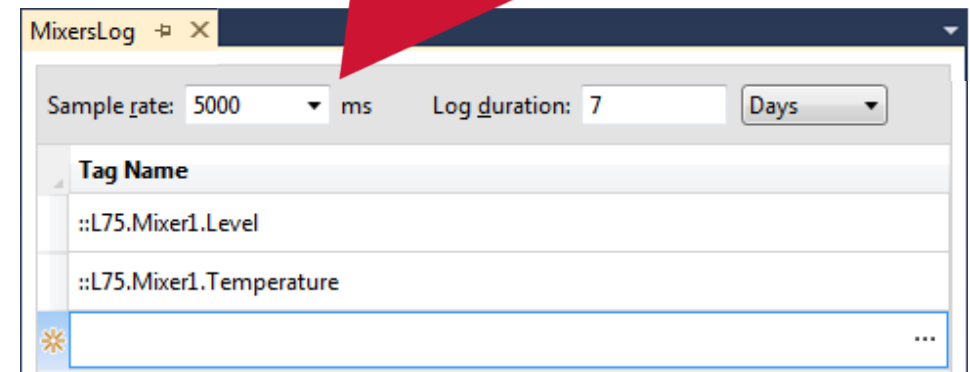
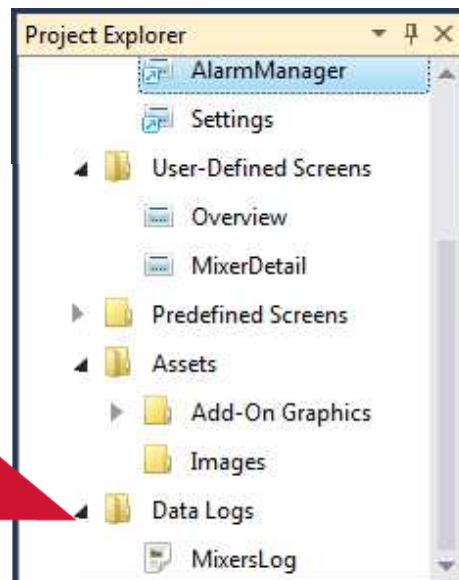
	PanelView™ 5500	PanelView™ 5310
Display Sizes	7", 9W", 10", 12W", 15", 19"	6", 7W", 9W", 12W"
Operator Input	Touch (all), Navigation Button (all), Keypad (optional)	Touch only
I/O	2 USB Host, 1 USB Device (programming), SD Card	1 USB Host, 1 USB Device (programming), SD Card
Enclosure Rating	IP66/NEMA 12/13/4x	IP65/NEMA 12/13/4
Operating Environment	0-55C	0-45C
Shock/Vibration	15G Operating Shock/2G Operating Vibration	15G Operating Shock, 1G Operating Vibration
Certifications	c-UL-us, CE, UL Class 1/Div 2, KC, RCM, Planned: ATEX, IECEx, Marine, EAC	c-UL-us, CE, KC, RCM, EAC
Power Options	AC or DC (Isolated)	DC (Non-Isolated)
Communications	10/100 Ethernet DLR (dual-port)	10/100 Ethernet (Single Port)
# of screens	100	50

Data logging

- Log data on the PanelView 5000 terminal and then display that historical data on a trend.
- Up to 250 tags can be logged.
- Logs are stored in circular logs.
- Logs are stored on an SD card in the PanelView 5000.
- Logs can be exported in csv format to a USB flash drive using a predefined Settings screen.

Tags can be logged as fast as every 500 msec.

New Data Logs folder in Project Explorer supports up to 3 different logs for different tags and rates.



Each log can be configured for different sample rates, durations, and tags.

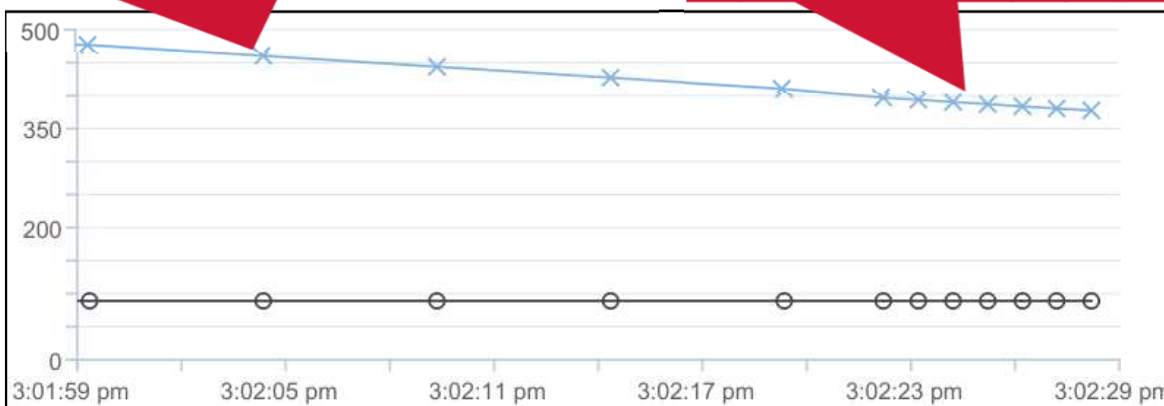
Historical trending

- No trend configuration is required to display logged data
 - If a trend trace is bound to a tag which is also logged, the trend will automatically show historical data if the trend is panned to a time where no real-time data exists for that tag
 - Trends show historical data immediately when the screen is displayed

New TimeSpanStart trend property can be used to instantly scroll the trend to a specific date/time

Historical data shown when real-time data is not available

Real-time data is shown when it is available



Property	Value
Name	Trend_0
Type	Trend
MaxValue	500
MinValue	0
SampleRate	1000
TimeSpan	60
TimeSpanStart	04/10/2017 13:06:16

Emulator

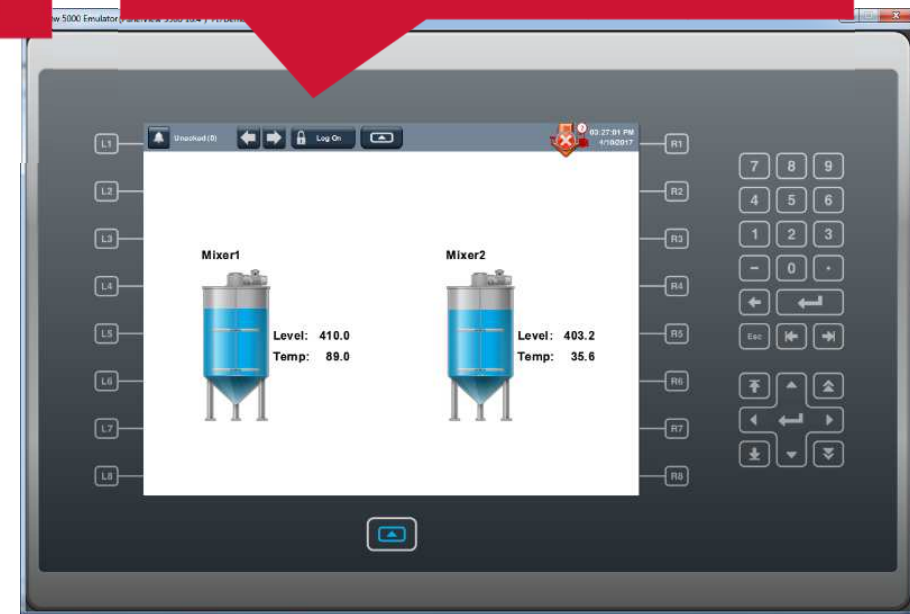
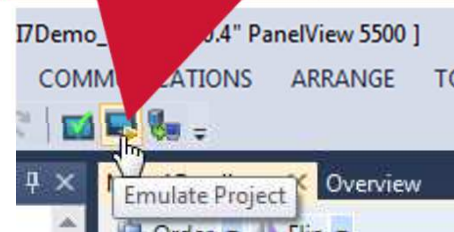
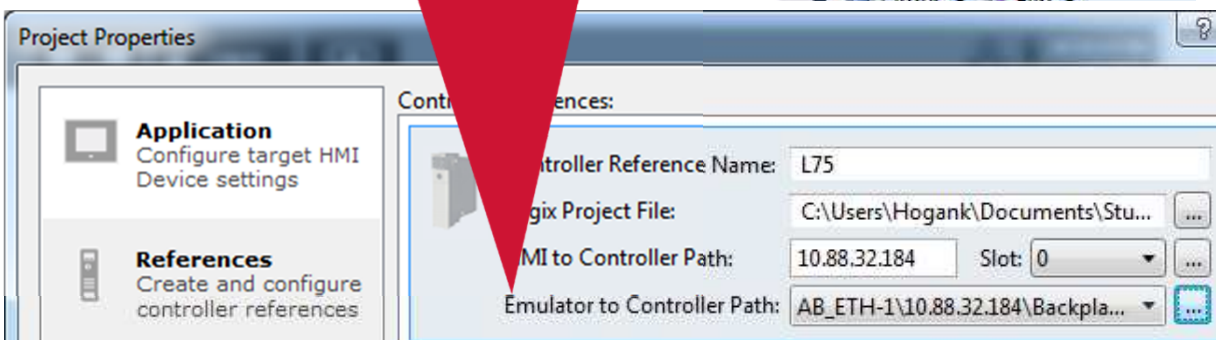
Rockwell
Automation

- Emulator lets you test run a project without downloading to a physical PanelView™ 5000 terminal

New Emulator to Controller Path lets you define a unique path to a controller for emulation. It does not have to be the same controller used by the physical terminal

To test your project, just click the Emulate button on the toolbar

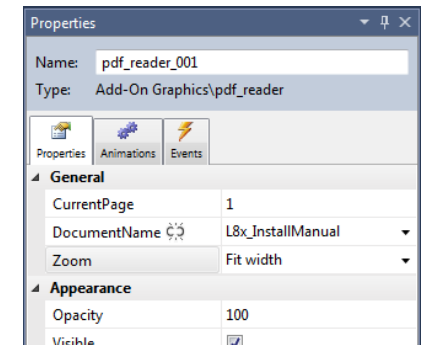
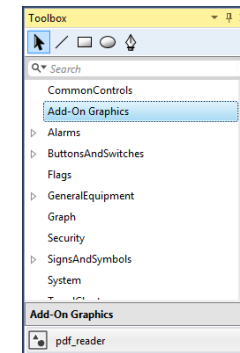
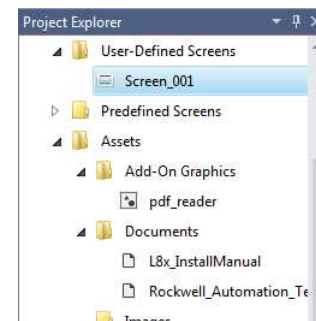
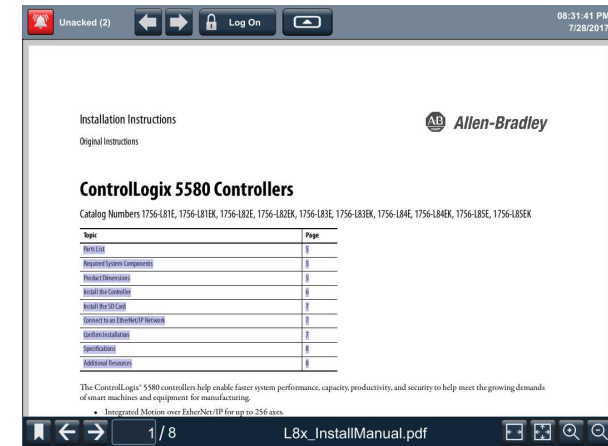
The emulator launches with a “skin” matching the PanelView™ 5000 terminal you configured for your project – including functional keypad buttons



PDF Viewer

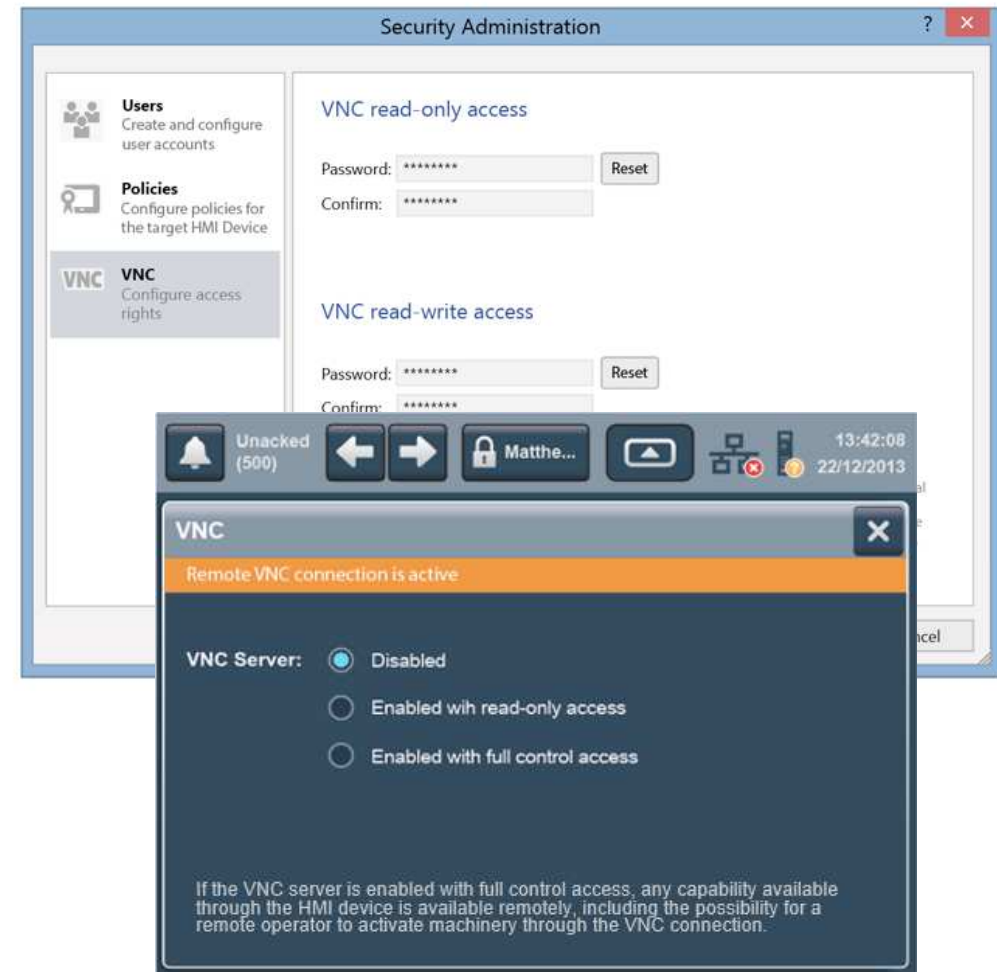
Rockwell
Automation

- Add PDF content to your View Designer project and then display that content in a new PDF viewer graphic element you can place wherever you want on your screens.
- PDF files can be launched to specific page numbers to quickly provide operators the information they need.
- The PDF viewer is supported in the PanelView 5500 only.

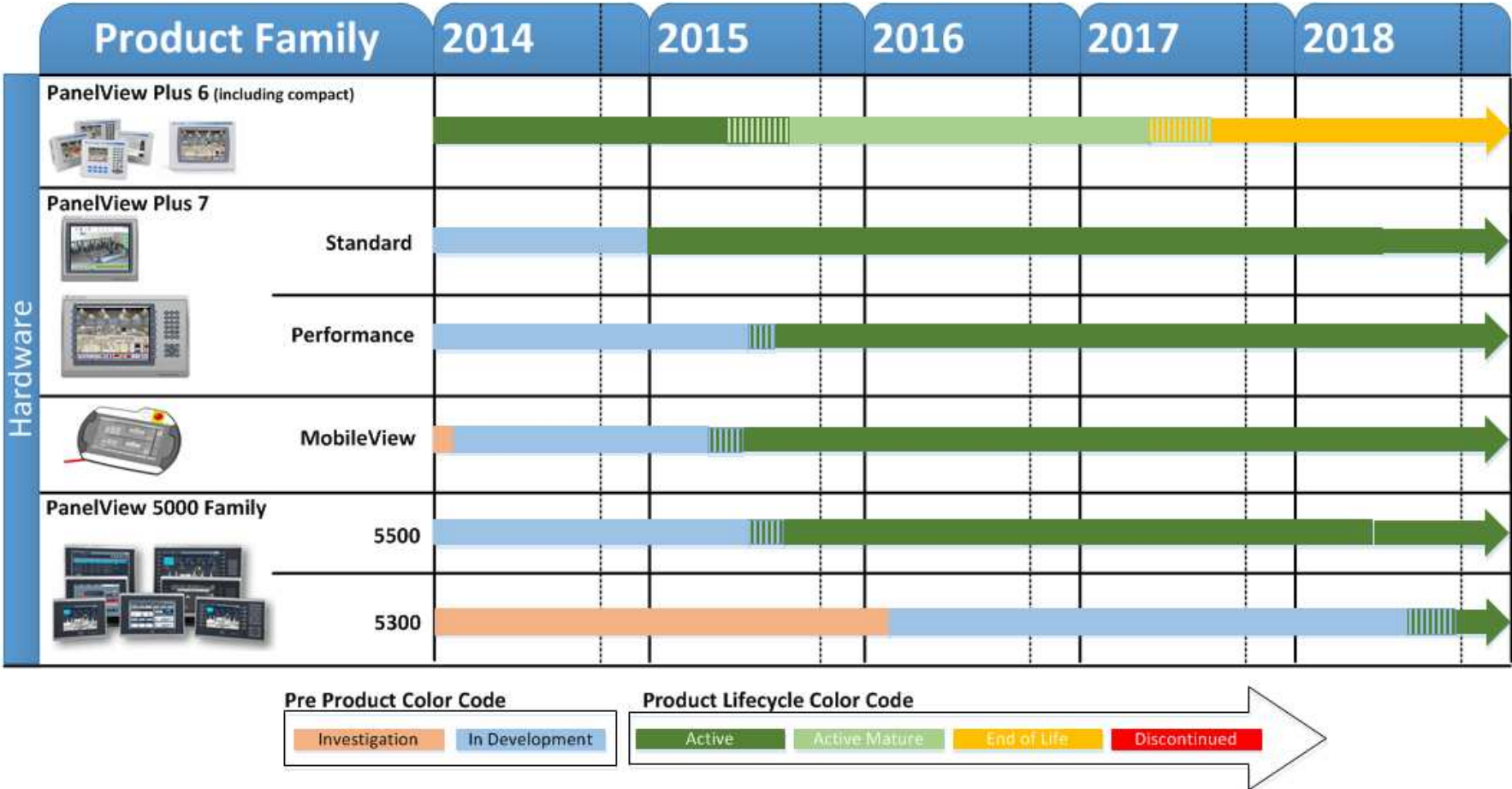


VNC support

- The PanelView 5000 terminals use a built-in VNC server to support a remote VNC client for monitoring and troubleshooting.
- Passwords can be configured to allow full read/write access or read-only access to only VNC client users who enter the correct password.
- A new Settings screen can be used at runtime to further lock down the PanelView 5000 to disallow VNC access or limit it to read-only access if desired.
- A new system tag indicates if a VNC client is connected.



Operator Interface Portfolio Roadmap



LISTEN.
THINK.
SOLVE.®

Industrial computers



PUBLIC

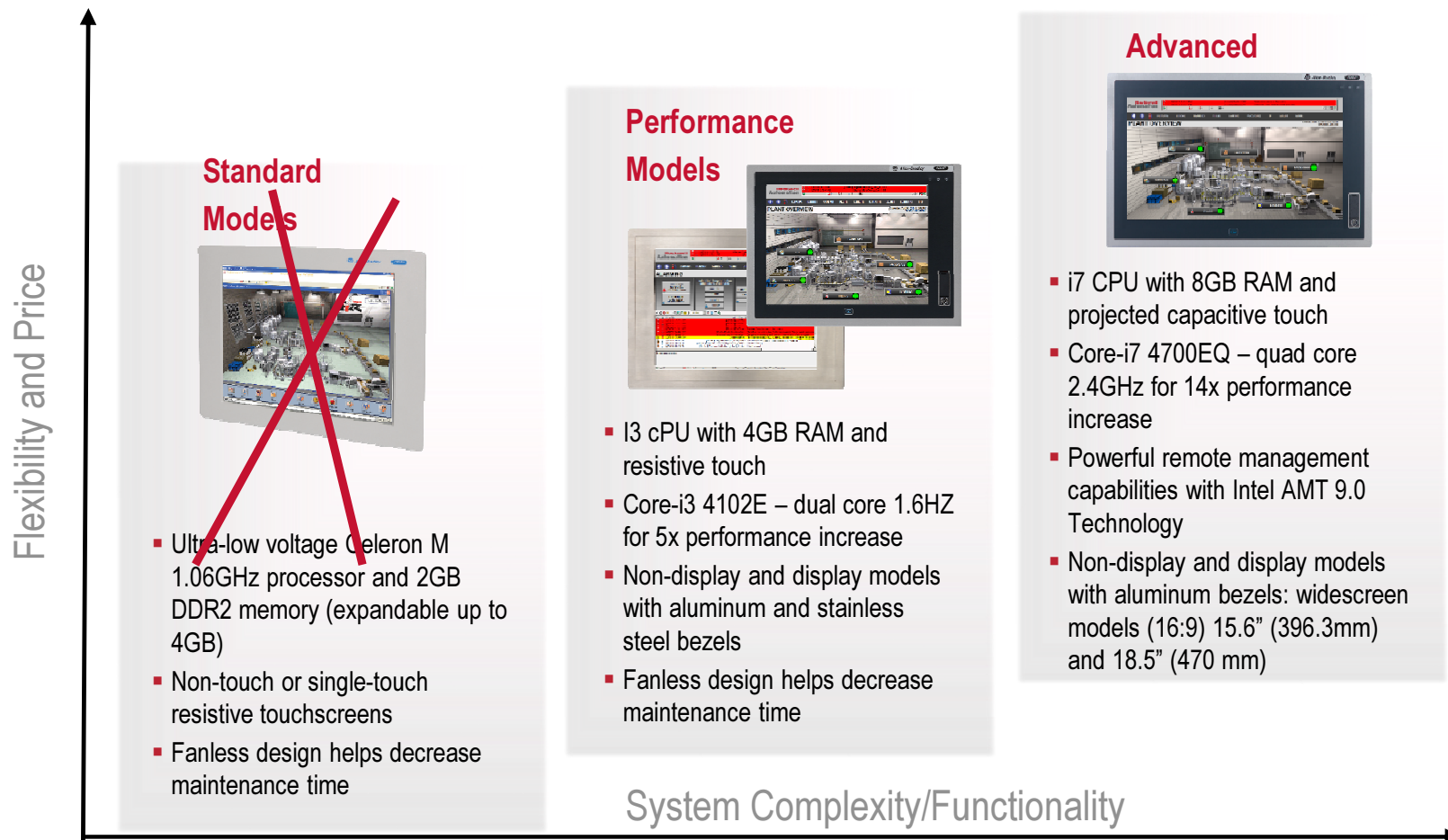
Allen-Bradley • Rockwell Software

**Rockwell
Automation**

6181 Integrated Display Computers

Relative Positioning

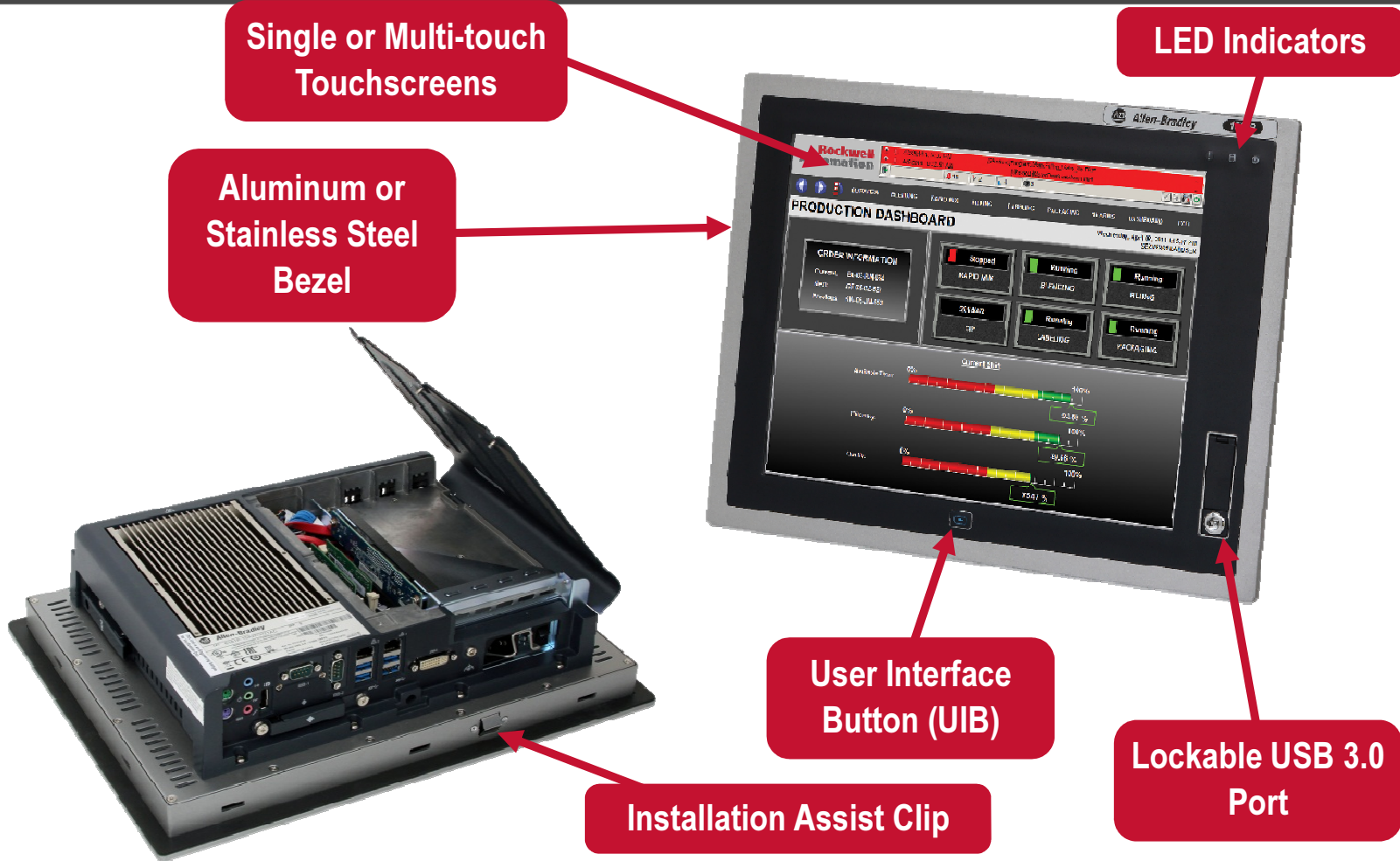
**Rockwell
Automation**



6181 Performance and Advance Models

Anatomy

**Rockwell
Automation**



LISTEN.
THINK.
SOLVE.®

VersaView 5000 Series

September 2017

PUBLIC

 *Allen-Bradley • Rockwell Software*

**Rockwell
Automation**

Portfolio Offering

Rockwell
Automation

- VersaView™ 5100 Monitors
- VersaView 5200 Thin Clients
 - Integrated display panel thin clients and non-display thin clients
- VersaView 5400 PCs
 - Integrated display panel PCs and non-display PCs



Innovative open architecture and modern design!

Environmental Ratings and Certifications

- Certifications: CE, c-UL-us Listed, EAC, KC and RCM
- Integrated Display: IP65, 0...50 °C
- Non-Display: IP20, -20...+60 °C
- Maintenance free design with no battery to replace – also eases air shipping requirements
- Edge-to-edge, **all-glass display design** is easy to clean for food and pharmaceutical applications



VersaView 5400 Industrial Computers

**Rockwell
Automation**

- Intel Atom Bay Trail Quad Core (E3845), 4 GB RAM, 128 GB SSD
- Windows 7/WES 7/Windows 10 IoT Enterprise 32-bit & 64-bit operating systems
- Fan-less with no moving parts, no battery design for increased reliability

Integrated Display Computer

- Single external display support (DisplayPort)
- Edge-to-edge glass widescreen multi-touch capacitive display
- 12", 15", 19" and 22" with full HD option



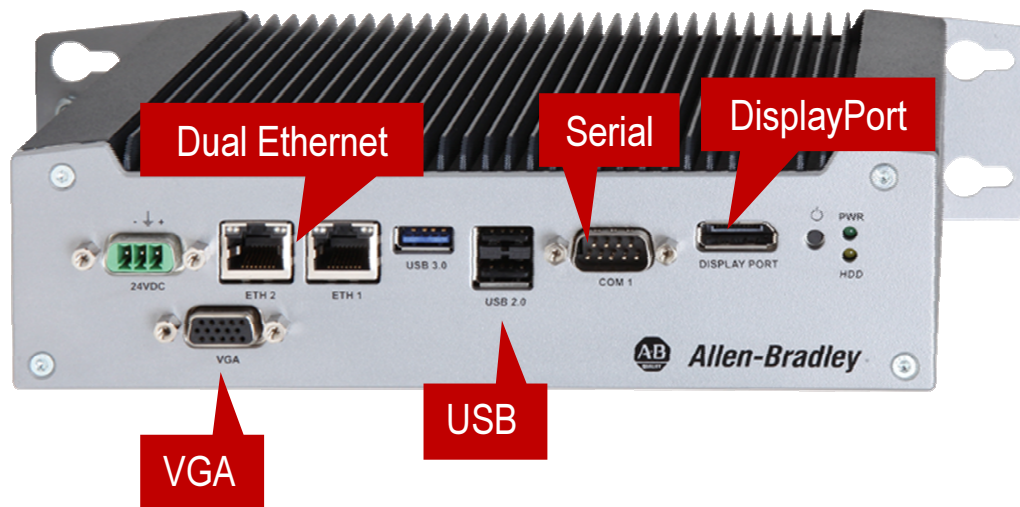
Non-Display Computer

- Dual external display supports (DisplayPort)
- Small form factor
- Multiple mounting options

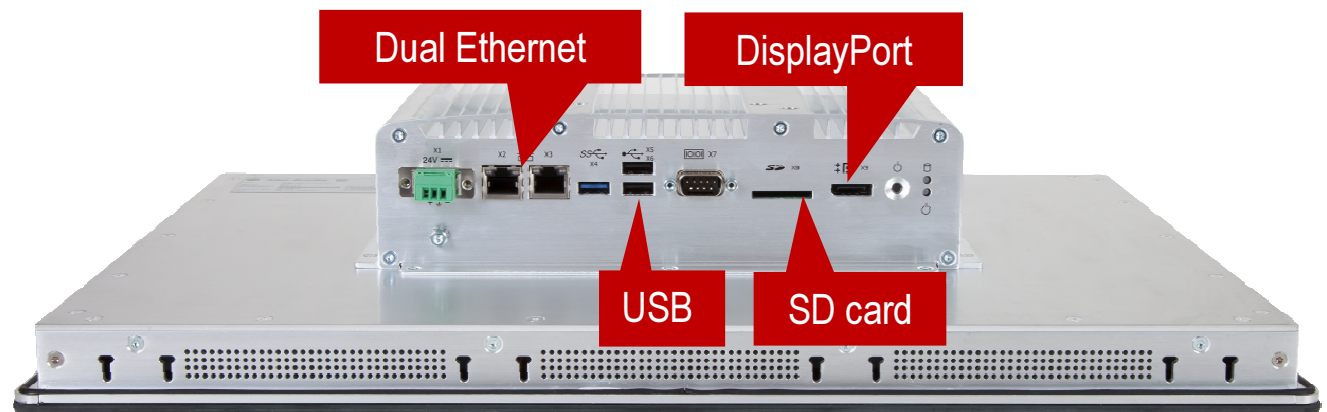


Available I/O Ports

**Rockwell
Automation**



- DisplayPort to VGA and DVI adaptors will be available
- All systems are 24V DC – an optional external AC/DC adaptor will be offered



VersaView 5200 Panel Thin Clients

**Rockwell
Automation**

- **Integrates with ThinManager®** software for efficient centralized management
- **No operating system** for increased application flexibility
- Industrial grade components suitable for harsh environments

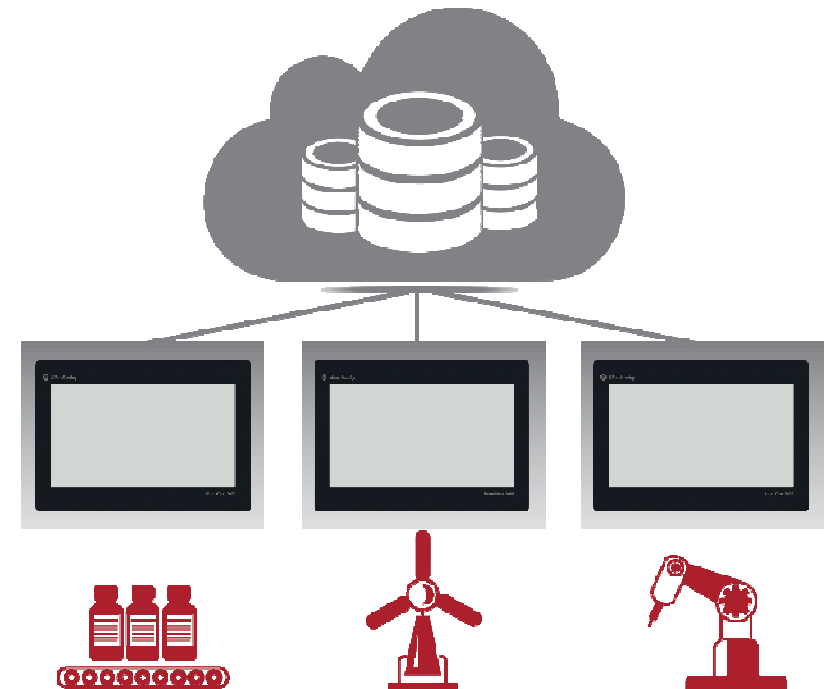


Integrate ThinManager software into a robust industrial thin client

VersaView 5200 with ThinManager

Rockwell
Automation

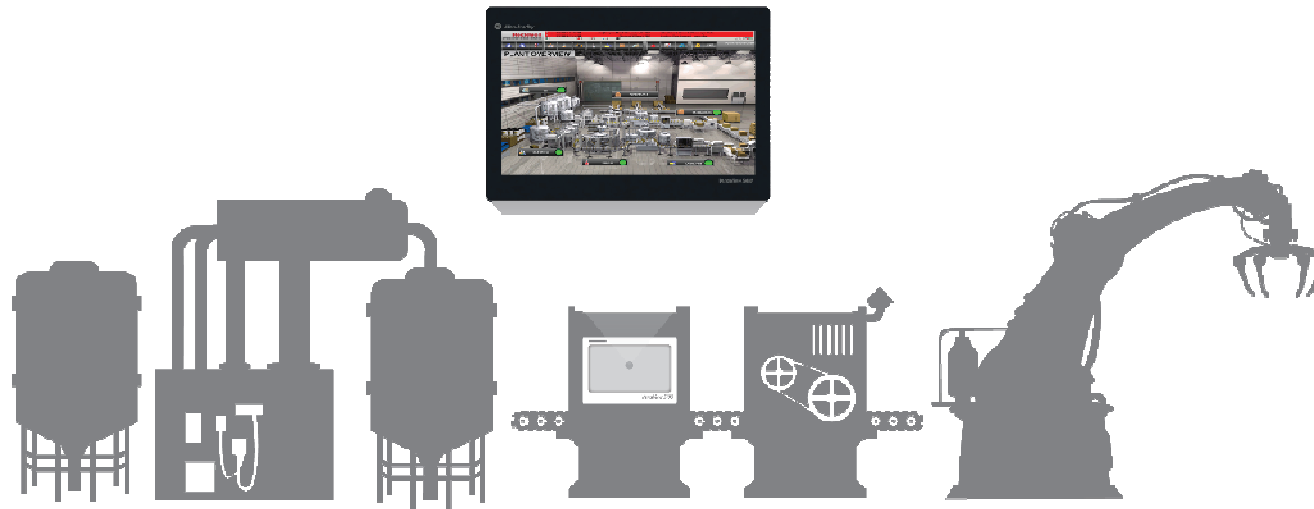
- VersaView 5200 is optimized with ThinManager software, providing an ideal single platform for industrial applications
- Ideal for distributed applications using FactoryTalk View Site Edition technology
- Reduces hardware and management costs to deliver reduced cost of ownership



VersaView 5100 Monitors

**Rockwell
Automation**

- Uses the same modern design and cutout sizes as the VersaView 5400
- Widescreen 10-point multi-touch capacitive display
- Edge-to-edge glass design for easier cleaning
- Combine monitors with any Allen-Bradley® non-display industrial computer to create an efficient computing solution



VersaView 5000

More Than a New Product Line

**Rockwell
Automation**

- It's a new way of doing business for the Visualization hardware team
 - **Reduced lead times** with supply chain improvements
 - Commonly sold catalog numbers will be in stock and delivered immediately
 - **Lower cost** to be competitive in the market
 - Driving towards **global stocking** program

Selection Guide

Rockwell
Automation

ViewSE Station HMI,
Thin Client, Displays,
Workstation Computer,
Analytics Appliance

- Lowest cost & Thin Client, 16:9 displays, multi-touch
- VersaView 5000 ([Website](#))



ViewSE Station,
Workstation, Standalone
Apps
Hazardous Location

- Hazardous location, expandable memory/storage/PCI-Express I/O cards
- 6181X ([Website](#))



ViewSE Station,
Workstation
Highest Performance

- Highest performance, expandable memory/storage/PCI-Express I/O cards, 4:3 & 16:9 displays, single & multi-touch, Stainless/NEMA 4X options
- 6181P ([Website](#))



VersaView® 5000 Platform

Updated Release schedule

**Rockwell
Automation**

- VersaView® *5000* release status
 - 5200 Box Thin Clients – **RELEASED**
 - 5200 Integrated Display Thin Clients – **RELEASED**
 - 5400 Box PCs – **RELEASED**
 - 5400 Integrated Display PCs – **15-30 Sept 2017**
 - 5100 Monitors – **October 2017**



Part number 6200T-NA on stock in EMEA today.

LISTEN.
THINK.
SOLVE.®

FactoryTalk® View Site Edition

Building a better View



PUBLIC

 Allen-Bradley • Rockwell Software

**Rockwell
Automation**

A View for Every Manufacturing Scenario

**Rockwell
Automation**

FactoryTalk® View Machine Edition

Panel HMI



PanelView™ Plus and Compact

FactoryTalk® View Site Edition

Scalable PC Based HMI



Industrial and Non-Industrial Computers and Monitors

FactoryTalk® ViewPoint

Web-Based HMI



Release Update



Visualization Software 2016

**Rockwell
Automation**

View ME/SE 8.2 ViewPoint 8.2

March 2016

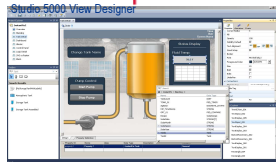


- Intrinsic electronic signature function
- Detect data falsification in CSV data log
- Switch HMI application language
- TrendX update to support logarithmic trend

- Control access to critical process set points and values
- Track operator actions for regulated applications
- Productivity improvements

View Designer 3.0 w/ Studio 5000 v30

Q4 2016

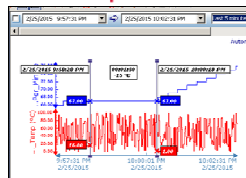


- Add on Graphic (AOG)
- Run Time Language Switching
- Windows 10 Support
- New controller support for 5580 and 5380 family
- Multi-versions support

- Design efficiency and ease of re-use
- Native language support for global users

View ME/SE 9.0

Q4 2016

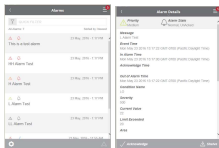


- New Trend object
- View32 Recipe Pro Migration
- Logix extended tag properties support
- Windows 10 Support

- Usability improvement
- Tightly integrated control and HMI solution
- New recipe capability to support migration for View32 customers

ViewPoint 9.0

Q4 2016



- Mobile AlarmView
- Alarm acknowledgement and shelving support
- Updated platform support

- New AlarmView build with mobile first design
- Operator efficiency with alarm management from a mobile device

Operating System Platform Support

Rockwell
Automation

■ OS Support:

- **Windows Server 2016 Std (64 bit)**
- Windows Server 2012 Std (64 bit)
- Windows Server 2012 R2 Std (64 bit)
- Windows Server 2008 R2 Enterprise Edition
- Windows 7 SP 1 Enterprise Edition
- Windows 7 SP 1 Ultimate Edition
- Windows 8.10 Pro (32 / 64 bit)
- Windows 8.10 Enterprise (32 / 64 bit)
- Windows 8 Pro (32 / 64 bit)
- Windows 8 Enterprise (32 / 64 bit)
- **Windows 10**

■ OS No Longer Supported*:

- Windows XP (8.10)
- Windows Vista (8.00)
- Windows Server 2003 (8.00)



Microsoft

FactoryTalk® View 9.0 New Trend Control

Rockwell
Automation

- Leverages the FactoryTalk® VantagePoint® trend control which provides market leading capabilities:
 - Stacked Y-axis
 - Easy configuration
 - Ad-hoc trending
- Data sources for first release
 - FactoryTalk® View SE datalogs
 - Both ODBC log data and native datalog
 - FactoryTalk® Live Data

The screenshot displays the FactoryTalk View 9.0 interface. The top window shows a trend control chart for 'MachineSpeed' with a 'True' label and a time range from 5/26/2015 1:13:41 PM to 1:18:41 PM. The bottom window shows the 'Properties' dialog for the 'MachineSpeed' tag, with the 'Trace' tab selected. The dialog includes options for 'Display' (Trace line, Point markers, Direction arrows, Statistics), 'Point markers' (Shape: Star, Color: R: 0, G: 0, B: 0, Size: 8), 'Plotting algorithm' (Sample and hold, Linear interpolation), and 'Discrete and time tags' (Enable shading, Use trace color). The 'Apply these trace settings to all new Trends' checkbox is checked. The bottom window also shows a list of items (38) and a table of tags.

Tag	...	Description	Style	Axis Min	Axis Max	Unit
...ulator.Line 1.Tags.MachineSpeed	1	Simulated machine speed		-10.00	110.00	
...ator.Line 1.Tags.MachineRunning	2	Run state of the machine		-0.10	1.10	
...sing a Time Period.Age In Hours	3			-10.00	110.00	

Controller Extended Properties Read Support

**FactoryTalk®
View ME/SE v9.0 ≤**



**FactoryTalk®
Live Data**

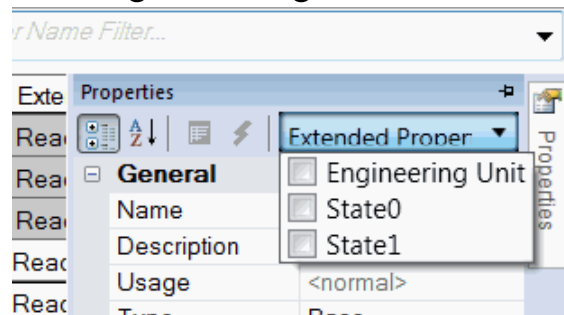


RSLinx® Enterprise



v21 ≤

Logix Designer v21 ≤



Meta Property	Description
Tag.@Name	Tag Name "Path+name"
Tag.@Description	Multi-lingual Description
Tag.@EngineeringUnit	Multi-lingual text for units
Tag.@Min	Minimum Numeric Value
Tag.@Max	Maximum Numeric Value
Tag.@State0	Multi-lingual Text for BOOL 0 state
Tag.@State1	Multi-lingual Text for BOOL 1 state

OVERVIEW

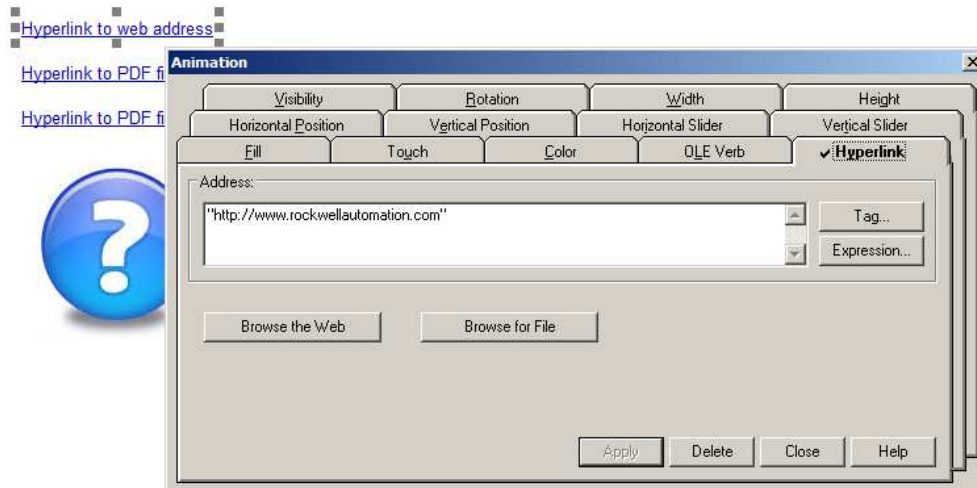
- RSLinx® Enterprise reads Logix Extended Properties
- Runtime inheritance of controller setting / value changes
- Includes language switching for text

BENEFITS

- Enhances View SE/ME productivity by create parameterized reusable faceplates and global object
- Change based communications to minimize system impact (no polling)
- Controller's memory = master copy (single version of the truth)

Hyperlink Animation

**Rockwell
Automation**



OVERVIEW

- Embed hyperlinks in FactoryTalk® View SE or FactoryTalk® View ME screens
- Hyperlinks will publish to FactoryTalk® ViewPoint

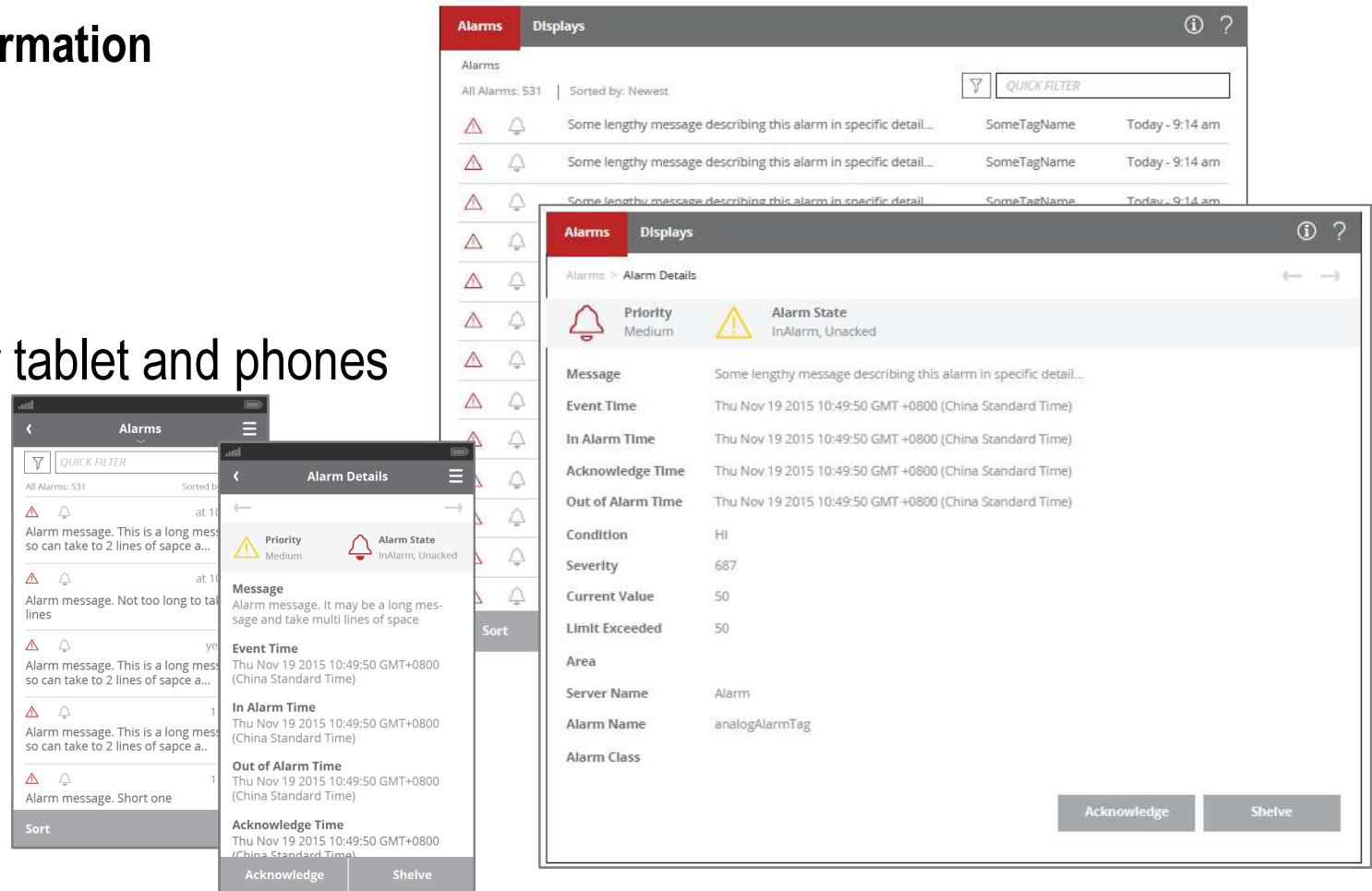
BENEFITS

- Link to websites or network-hosted PDF documents

FactoryTalk[®] ViewPoint Mobile Mobile Alarm View

Rockwell
Automation

- Direct access to alarm information on a mobile device
- Optimized view for mobile devices
 - Responsive design for tablet and phones
- Operator Actions
 - Acknowledge
 - Shelve



LISTEN.
THINK.
SOLVE.®

FactoryTalk View SE

Client Server Bundles



 *Allen-Bradley • Rockwell Software*

**Rockwell
Automation**

FT View Site Edition Distributed

New Part Numbers



Details

Catalog Number	Description	DS	Type	List (EUR)
9701-VWSS000CW10LENE	View SE unlimited displays server, 10 R/W clients, 1 ViewPoint client	N2	ESD	9.320
9701-VWSS000CW10LENM	View SE unlimited displays server, 10 R/W clients, 1 ViewPoint client	N2	Media	9.380
9701-VWSS000CW25LENE	View SE unlimited displays server, 25 R/W clients, 1 ViewPoint client	N2	ESD	18.600
9701-VWSS000CW25LENM	View SE unlimited displays server, 25 R/W clients, 1 ViewPoint client	N2	Media	18.700

View SE Distributed with 10 Clients

- 1 View SE server with unlimited displays
- 10 View SE clients
- 1 ViewPoint client
- One serial number for HMI server and bundled clients

View SE Distributed with 25 Clients

- 1 View SE server with unlimited displays
- 25 View SE clients
- 1 ViewPoint client
- One serial number for HMI server and bundled client

FT View Site Edition Distributed Commercial Value

**Rockwell
Automation**

More value for money

Case 1: Add ThinManager

..... at SAME cost

- **BEFORE:** Unlimited Svr + 10 Clients + 1 VP
typical 15% discount **25.110 EUR**
- **NOW :** “Unlimited Svr/10 client” + **ThinManager 10-Client**
“sell @ list policy” **20.700 EUR**
credit for infrastructure modernization* **4.410 EUR**

Case 2: more clients & richer GUI...

..... at SAME cost

- **BEFORE:** 25 Display Svr + 5 Clients + 1 VP Client
typical 15% discount **9521 EUR**
- **NOW :** **Unlimited** display Svr + **10** clients + 1 VP client
“sell @ list policy” **9.320 EUR**

* ThinManager is based on MS RDS Server. Modernization if infrastructure might be required.

Top-up your Architecture with exiting FTView SE options (more clients, Viewpoint clients etc.)

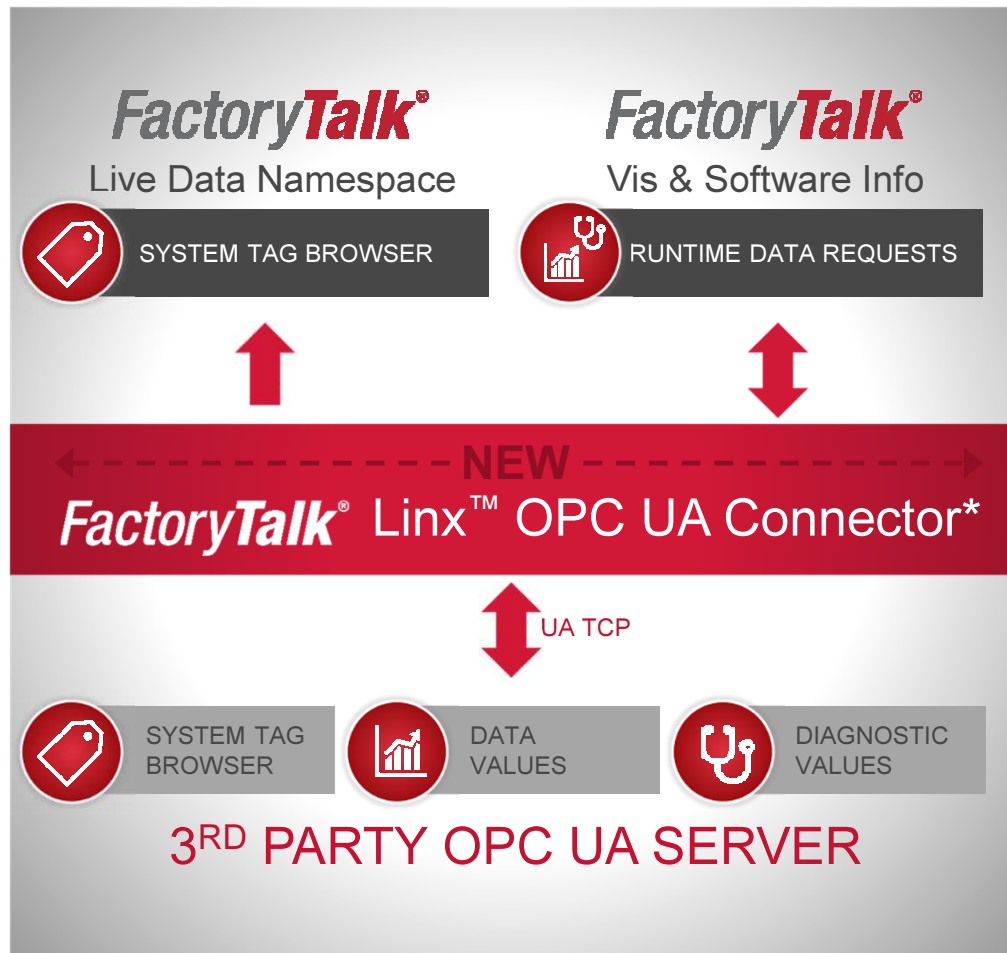
LISTEN.
THINK.
SOLVE.®

OPC-UA new Support

FactoryTalk® Live Data

OPC® UA Connector

**Rockwell
Automation**



Overview

- New connector adds OPC® UA communications to FactoryTalk® Live Data
- OPC UA data definitions merged into FactoryTalk® Live Data namespace
- TCP data exchange eliminates DCOM

Benefits

- **Nothing new to buy / just upgrade to FactoryTalk® Services Platform v3.00**
- Permits FactoryTalk® Software to interface with 3rd party data servers
- More productive system namespace browsing
- Enhanced security and stability

FactoryTalk[®] Linx Gateway

OPC UA Support

**Rockwell
Automation**

3RD PARTY OPC
DATA CLIENT



3RD PARTY OPC
UA CLIENT*



ENHANCED
FactoryTalk[®] Linx[™] Gateway
(9355-OPDxxxxENE)



FactoryTalk[®] Linx[™] & Live Data



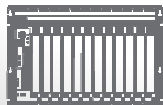
SYSTEM TAG
BROWSER



DATA
VALUES



DIAGNOSTIC
VALUES



Overview

- FactoryTalk[®] Linx[™] Gateway adds ability to server data to OPC UA clients
- Uses FactoryTalk[®] Linx[™] high performance, distributed & redundant server capabilities
- Browse service to deliver controller data definitions to external OPC Clients
- TCP data exchange eliminates DCOM

Benefits

- Included with new version for existing owners of FactoryTalk[®] Gateway
- Scalable from a single station to large multi-server and high availability systems
- Provides 3rd party software high speed access to Rockwell Automation controllers
- Enhanced security and stability

