

Dny nové techniky 2021

Petr Mikšovský – Product Manager řídicích systémů, sw a terminálů

Agenda

- **Malé řídicí systém**
- **Řídicí systémy střední třídy**
- **Velké řídicí systém**
- **FactoryTalk View SE**
- **PlantPAx**
- **Zajímavosti na závěr**

MALE ŘÍDICÍ SYSTEMY

**Existuje vůbec nějaký jednoduchý
přehled k jakému hardware se CCW používá?**



Add Device

Catalog Selection [Select existing device...](#)

- Controllers
 - Micro810
 - Micro820
 - Micro830
 - Micro850
 - Micro870
- Drives
 - Kinetix 3
 - PowerFlex 4-Class
 - PowerFlex 520-Series
 - PowerFlex 750-Series
 - PowerFlex 7-Class
 - PowerFlex 6000T Gen Purpose Drv
 - PowerFlex DC
 - PowerFlex DC FC
- Motor Starters
 - E200 Overload 193-ECM-PCM
 - SMC-50 MV no Soft Stop
 - SMC-50 MV Soft Starter
 - SMC-50 Standard
 - SMC Flex
- Safety

Select existing device from catalog.

Add Device

Catalog Selection

- SMC Flex
 - Safety
 - MSR57
 - 440C Safety Relays
 - 440C-CR30-22BBB
 - 450L Light Curtains
 - 450L
 - Graphic Terminals
 - PanelView 800
 - 2711R-T10T
 - 2711R-T7T
 - 2711R-T4T
 - PanelView Component
 - 2711C-T10C
 - 2711C-T6C
 - 2711C-T6T
 - 2711C-T6M
 - 2711C-T4T
 - 2711C-T3M
 - 2711C-K3M
 - 2711C-K2M
 - 2711C-F2M

Select existing device from catalog.

Connected Components Workbench

Version 13.00.00 - Standard Edition

Copyright © 2021 Rockwell Automation Technologies, Inc. All Rights Reserved.

The program licensed to:
terminator
HP Inc.

Support Phone: +1-440-646-3434
<http://support.rockwellautomation.com>

Please refer to the Connected Components Workbench (CCW) license folder for the End User License Agreement (EULA) and open source license information and notices. This license folder is included with the software installation and the install copies it to the CCW install folder on your computer.

This computer program is protected by copyright law and international treaties. Unauthorized reproduction or distribution of this program, or any portion of it, may result in severe civil and criminal penalties, and will be prosecuted to the maximum extent possible under the law.

[More Info](#)

Add To Project

Jeden software pro více typů hardware

- End of Life (0)
- Replacement Category**
- Direct Replacement (0)
- Engineering Replacement (0)
- Functional Replacement (0)

Quick Links: [Product Family Page](#) [Find Downloads](#)



2711C-T6T | PanelView Component Graphic Terminal

Lifecycle status: **Discontinued**

Discontinued Date Not Available	Replacement Category NOTSET
------------------------------------	--------------------------------

Quick Links: [Product Family Page](#) [Find Downloads](#)



2711C-T4T | PanelView Component Graphic Terminal

Lifecycle status: **Discontinued**

Discontinued Date Not Available	Replacement Category NOTSET
------------------------------------	--------------------------------

Quick Links: [Product Family Page](#) [Find Downloads](#)



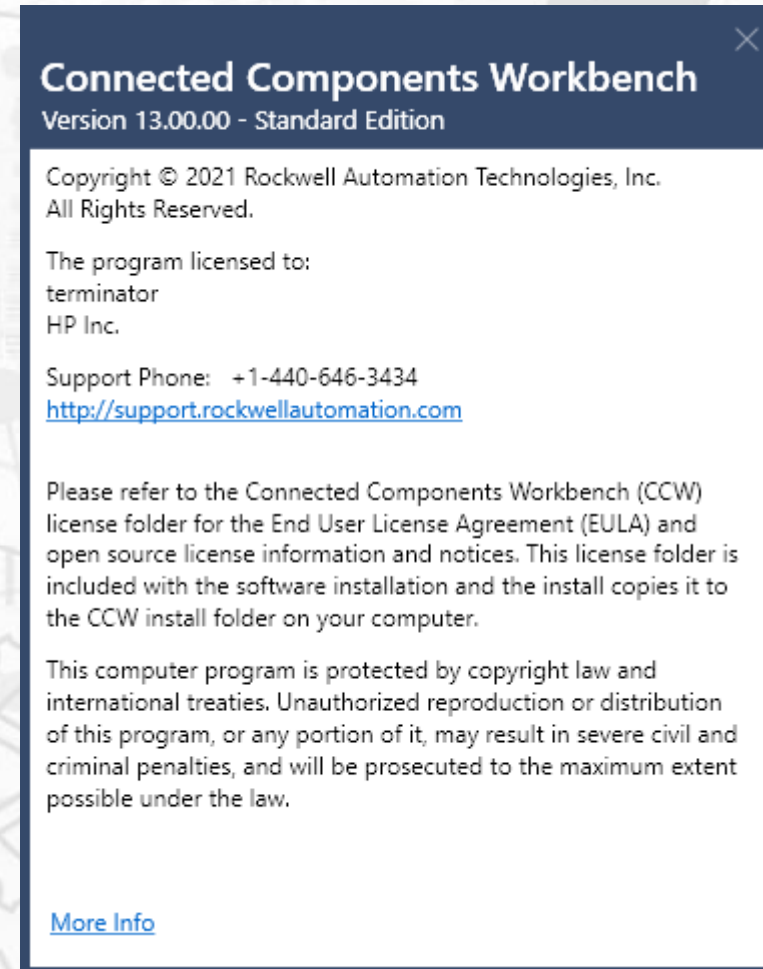
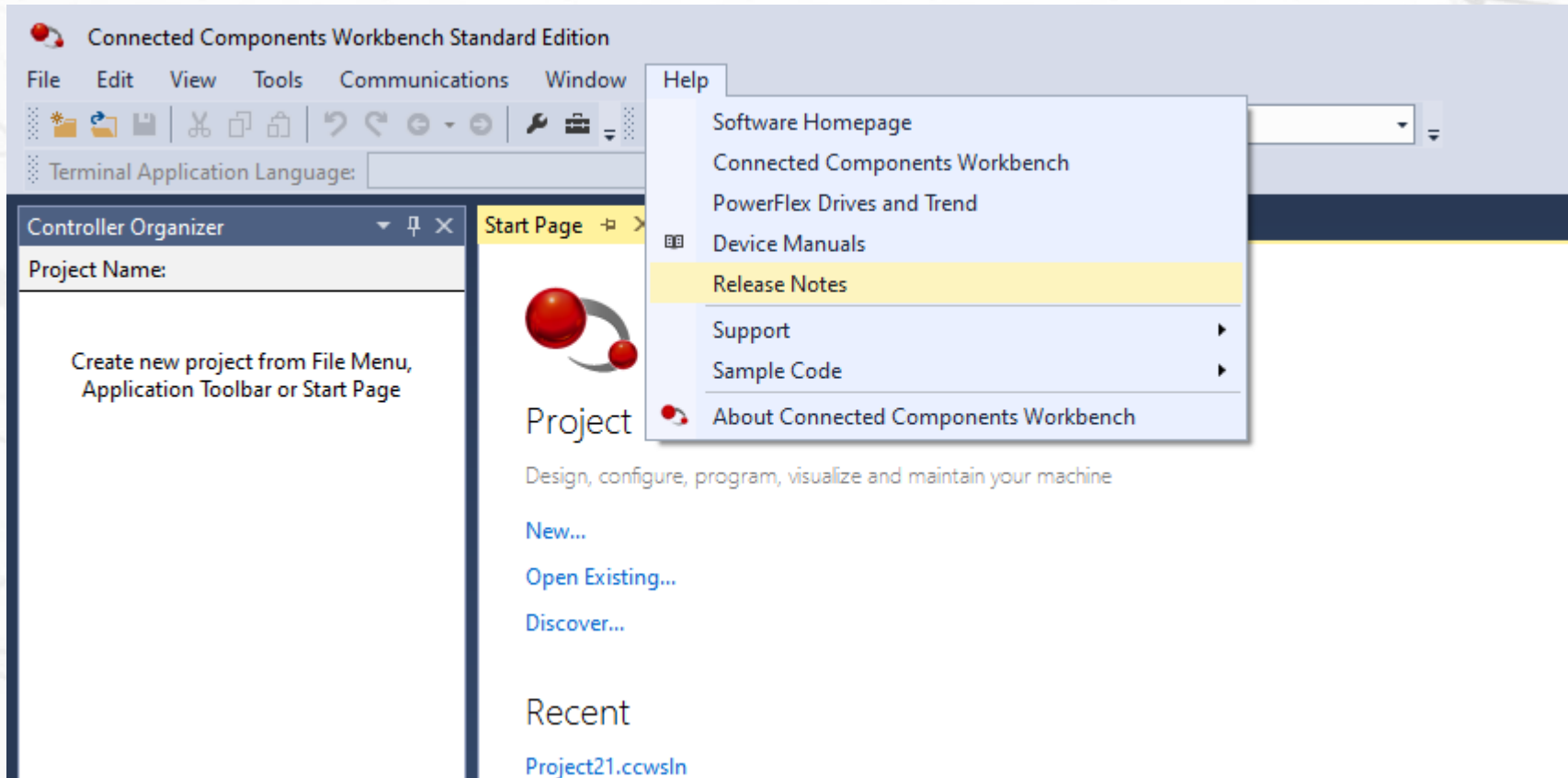
2711C-T6M | PanelView Component Graphic Terminal

Lifecycle status: **Discontinued**

PanelView Component jsou obsoleté a bylo nahrazeno PanelView 800

CCW stále nabízí možnost editace projektů pro tyto zastaralé panely.

Connected Components Workbench V13



Přesné informace o změnách v dané verzi může získat každý sám...

- Add and edit project assets
- Product Lifecycle Information and Update
Shows the product lifecycle status of the Micro800 controllers. When the Connected Components Workbench is installed, it will automatically update to the latest lifecycle every 90 days. Users can also update it manually.
- Verify Program
Supports to verify a single program's logic without having to build the whole solution.

- Enhanced Graphical Copy and Paste for Ladder Editor
Ladder logic program and instruction blocks can be copied and pasted from the Connected Components Workbench Ladder Diagram graphical editor and into the Studio 5000 Logix Designer.
- New Data Grid
Adopt an improved and efficient data grid with features like variable filter and quick declaration.

Pozastavit 00:00:00 Vybrat oblast Zvuk Nahrát ukazatel

Offline
No Forces
No Edits



Controller Organizer

- Controller trendx
 - Controller Tags
 - Controller Fault Handler
 - Power-Up Handler
- Tasks
 - Main Task
 - MainProgram
 - Parameters and Local Tags
 - MainRoutine
 - Unscheduled
 - Motion Groups
 - Ungrouped Axes
 - Add-On Instructions
- Data Types
 - User-Defined
 - Strings
 - Add-On-Defined
 - Predefined
 - Module-Defined
 - Trends
- Logical Model
- I/O Configuration
 - 1756 Backplane, 1756-A10
 - [5] Emulate 5570 trendx

MainProgram - MainRoutine*

0

pracovník bagr nedele

ADD

Add	první
Source A	??
Source B	druhy
Dest	vysledek

(End)

Errors

Project14 - Connected Components Workbench Standard Edition

File Edit View Device Format Tools Communications Window Help

Terminal Application Language: English (United States) (1033)

Theme: Logix

Pozastavit 00:00:00 Vybrat oblast Zvuk Nahrát ukazatel

Controller Organizer

Project Name: Project14

- Controller Micro850
 - Controller Variables
 - Tasks
 - MainTask
 - Program1
 - Prog1
 - Local Variables
 - Program2
 - Prog2
 - Assets
 - Add-On Instructions
 - DataTypes

Micro850-VAR Micro850 Prog1-POU*

Search

SUB MUL DIV ADD ABS MOD NEG TRN

Favorites Bit Rung/Branch Program Control Math Move/Copy Compare Serial Port Trig Functions Logical Conversion AS

2

pracovnik bagr nedele lopata

ADD

EN ENO

i1 i2 o1

prvni druhy vysledek

3

SUB

EN ENO

a b o1

c

Prog1-VAR

Scope: Prog1 Filter...

Name	Alias	Data Type	Dimension	Project Value	Ini
pracovnik		BOOL			
bagr		BOOL			
lopata		BOOL			
nedele		BOOL			
> prvni		DINT			
> druhy		DINT			
> vysledek		DINT			
> a		DINT			
> b		DINT			
c		REAL			
d		REAL			
+ New..					

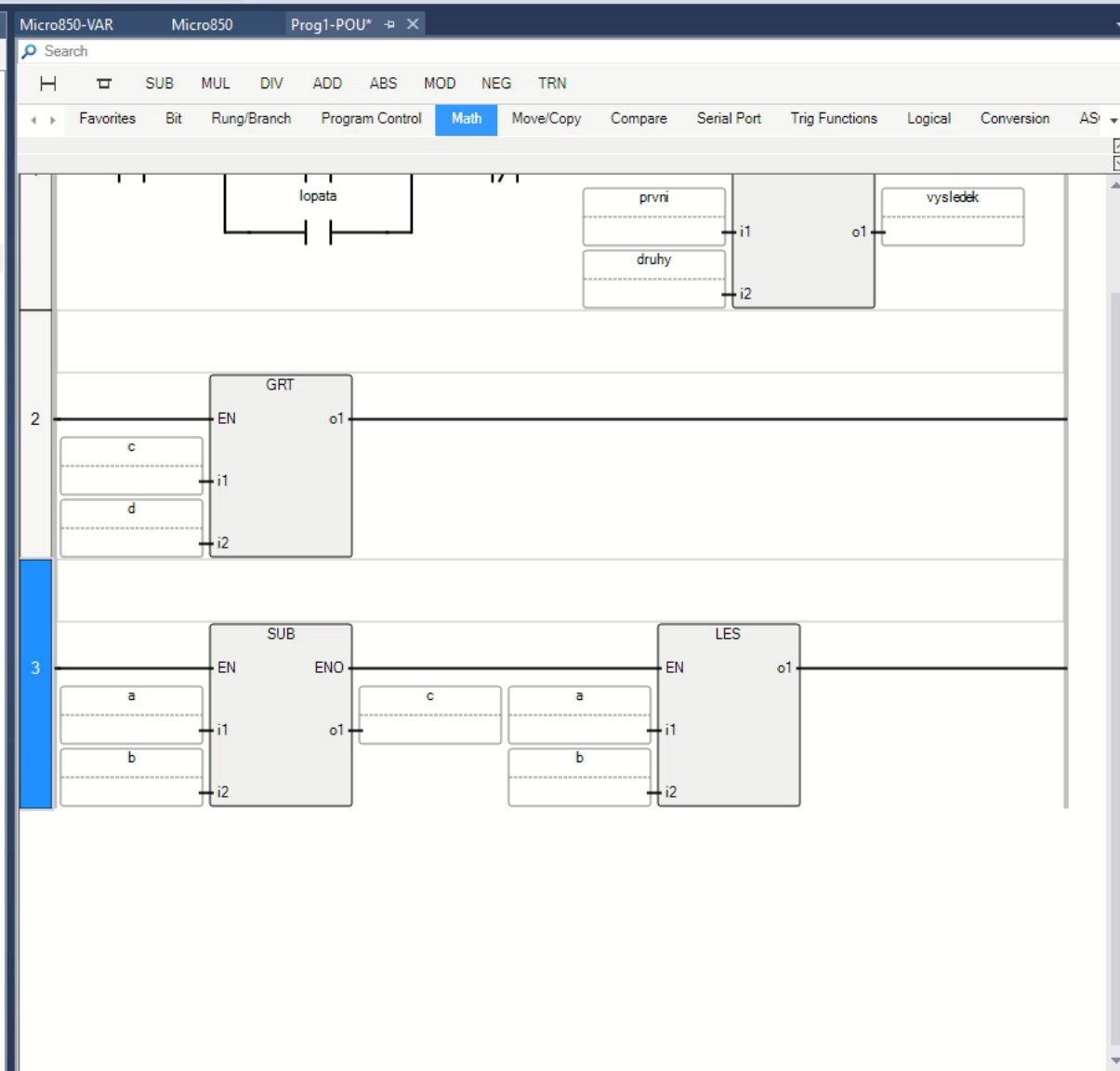
Error List Output

Rung #1 Ln 5 Col 13 Ch 0

Controller Organizer

Project Name: Project14

- Controller Micro850
 - Controller Variables
 - Tasks
 - MainTask
 - Program1
 - Prog1
 - Local Variables
 - Program2
 - Prog2
 - Assets
 - Add-On Instructions
 - DataTypes



Prog1-VAR

Scope: Prog1 Filter...

Name	Alias	Data Type	Dimension	Project Value	Ini
pracovnik		BOOL			
bagr		BOOL			
lopata		BOOL			
nedele		BOOL			
> prvni		DINT			
> druhy		DINT			
> vysledek		DINT			
> a		DINT			
> b		DINT			
c		REAL			
d		REAL			
+ New..					

PanelView800 DesignStation Features

- Time Entry datatype support
Prompted input according to Micro800 Time datatype Time datatype.
- Object explorer view
Editing aid to help user manage objects while designing.
- Software support on connectivity to CompactLogix5380 (L306). Terminal support will come in later Firmware minor release 6.012.

Enhanced features

The following enhanced features are introduced in this release:

- Supports to generate documentation for Micro800 Controller projects, including programs, variables, ASCII text, and controller configurations.
- Improve Find function to search for text or string in your project.

PanelView 800 DesignStation

- Global connection capability on existing system tags.
Animation configuration with enhanced memory tag settings.
- Multi-screen tab support in edit pane.

See also

[System requirements on page 1](#)



Workspace

- Workspace 'IAB_proj'
 - MicroLogix1400_001
 - Micro850_001
 - CompactLogix 1769-L1
 - CompactLogix 5069-L306ER

Wizard View Hardware View - MicroLogix1400_001

Configure chassis Connections Power supplies

Properties

- Control Power Information
 - Control Power St... | Not Satisfied by Cont...
- Backplane Power Information
 - Power Supply: 1766-L32BXB
 - 5V Used: 0 mA
 - 5V Remaining: 1225 mA
 - 24V Used: 0 mA
 - 24V Remaining: 1155 mA
- Field Power Information
 - Field Power Status: | Not Required
- Project Completeness Checker Inf...
 - Project Checker ... OK

Project Bill Of Material

Qty	Catalog #	Description	(€ - EUR) Unit Price	(€ - EUR) Price	Preferred Avail.
Hardware					
MicroLogix 1400_001					
001	1766-L32BXB	MicroLogix 1400, 24V DC Power, 8 Standard 24VDC / 12 Fast 24VDC Digital Inputs, 3 Standard 24VDC / ...	523,00	523,00	Preferred Avail
Subtotal:			€ 523,00		
Micro850_001					
001	2080-LC50-48QB8	Controller, 28 24 VDC/VAC Inputs, 20 Source Output, 24 DC Input Power, Up to 6 HSC channels, Embed...	551,00	551,00	Preferred Avail
Subtotal:			€ 551,00		
Compact Logix 1769-L1					
001	1769-L16ER-BB18	CompactLogix 5370 L1 Controller, 2 EtherNet/IP ports, 384KB memory, 16 DC in, 16 DC out, up to 6 173...	1.020,00	1.020,00	Preferred Avail
Subtotal:			€ 1.020,00		
Compact Logix 5069-L306ER					
001	5069-L306ER	CompactLogix 5380 Controller, 600KB, 8 I/Os, 16 nodes, Standard	800,00	800,00	Active
			N/A	N/A	Preferred Avail
001	5069-RTB64-SCREW	Power terminal RTB kit for CompactLogix 5380 Controllers and 5069-AEN2TR. Contains both 4 and 6 pin ...	21,10	21,10	Preferred Avail
Subtotal:			€ 821,10		
Total:			€ 2.915,10		

The list prices shown in this tool are reference points used by your distributor or Rockwell Automation to calculate your extended net prices and do not include applicable discounts and taxes. To obtain your extended net pricing for products, contact Rockwell Automation or your authorized distributor.

Your project has errors and/or warnings. This means that your system may or may not work as expected. You need to review and resolve these issues to your satisfaction by going to the Project Checker tab of the Project Completeness Wizard and the Errors/Warnings tab of the Communications Details dialog to see the errors and/or warnings.

Show all slot numbers
 Organized BOM
 Consolidated BOM
 Positional BOM
 * Included in Bulk Cable Section
 Show only PlantPAx System Elements and I/O
 ** Included in Hardware Section
 \$ Not Available For Sale for all COMING SOON description product catalogs

IAB Boo... Architec... Hardware Network On-Mac... Wizard ...

Device List

Search Clear Hide List Filters Filtering: OFF

- MicroLogix 1100
 - Controllers
 - I/O Modules
 - Analog I/O
 - Digital I/O
- MicroLogix 1200
 - Controllers
 - I/O Modules
 - Analog I/O
 - Digital I/O
- MicroLogix 1400
 - Controllers
 - I/O Modules

User Devices ControlLogix CompactLogix MicroLogix Micro800 Distributed I/O Motion Safety Other Hardware ControlNet DeviceNet EtherNet/IP Power Networks Other Network

**Co by nám ještě mohlo pomoci
při vývoji malých aplikací a prototypů jednoduchých strojů ?**





Nástroje pro práci technika

**Nástroje jsou nezbytnou investicí
a používají se opakovaně.**

2080-IF4



2080-IQ4OB4



2080-SERIALISOL



2080-OF2



2080-MOT-HSC



Micro 820



Micro SD karta s adaptérem

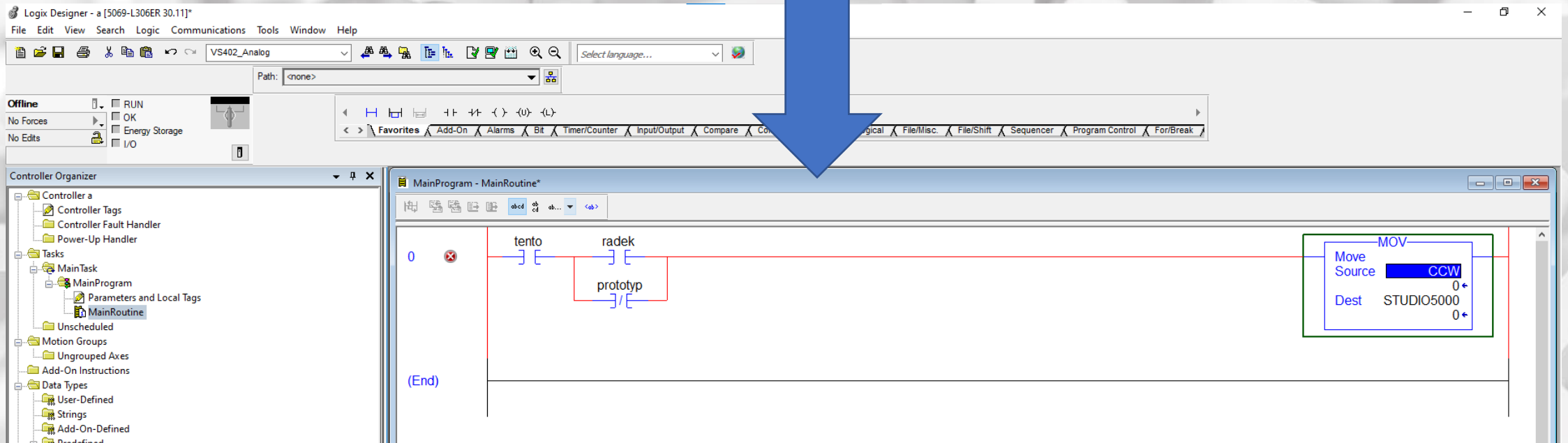
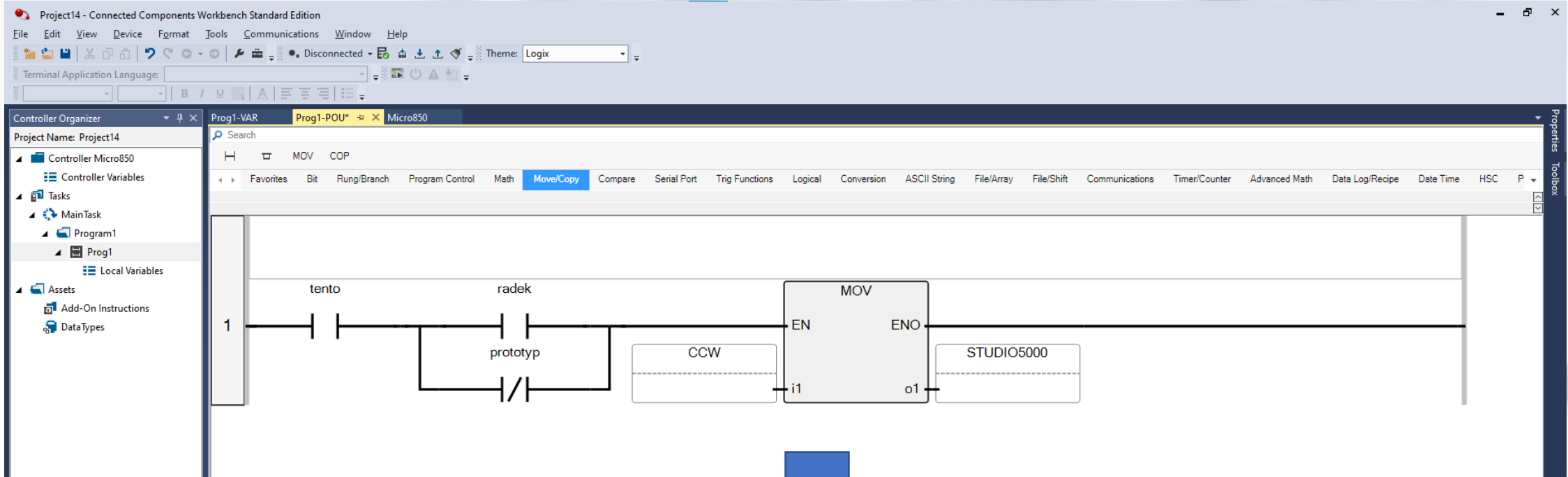


**Doporučené nástroje pro práci
technika/vývojáře**

Používají se opakovaně.

**Prototyp s Micro820 umožňuje logování výsledků
zkoušek na SD kartu**

Sparing partner pro ControlLogix a CompactLogix



Taky bych si tu sestavu koupil, kdyby na to byla speciální cena.



ŘÍDICÍ
SYSTEMY
STŘEDNÍ TŘÍDY

Drtivá většina zákazníků a partnerů nám potvrdila tento stav

- 1. Absolutní dominace sítí Ethernet**
- 2. Nastupující bezpečností systémy**
- 3. Rozsáhlé dědictví starších systémů, které nemají Ethernet a Safety řešení**

Stávající situace

DH485



Plynulá modernizace

CompactGuardLogix 5069-L3xxER(M)Sx + 5069-SERIAL (DH485), 5069-IB8S, 5069-OBV8S

Ethernet/IP



Ethernet/IP

DH485



1747-AENTR + I/O SLC500

SLC500

SLC500

SLC500

Získali jsme Ethernet/IP, Safety a zachovali DH485

Už mě nemůžou ničím překvapit...



RSLogix 500 Pro - NECO.RSS

File Edit View Search Comms Tools Window Help

0:5.1

OFFLINE No Forces
No Edits Forces Disabled
Driver: EMU500-1 Node: 1d

NECO.RSS LAD 2

Project
Help
Controller
Controller Properties
Processor Status
IO Configuration
Channel Configuration
Multipoint Monitor
Program Files
SYS 0 -
SYS 1 -
LAD 2 -
Data Files
Cross Reference
O0 - OUTPUT
I1 - INPUT
S2 - STATUS
B3 - BINARY
T4 - TIMER
C5 - COUNTER
R6 - CONTROL
N7 - INTEGER
F8 - FLOAT
Force Files
O0 - OUTPUT
I1 - INPUT
Custom Data Monitors
CDM 0 - Untitled
Custom Graphical Monitors
CGM 0 - Untitled
Recipe Monitors

0000
0001
0002

Save Program As...

Path: C:\Users\miksovsy\Documents\RSLogix500

Uložit do: RSLogix500

Název	Datum změny
neco.RSS	20.11.2020 10:47
NECO_BAK002.RSS	20.11.2020 9:13
NECO_BAK001.RSS	20.11.2020 9:13
NECO_BAK000.RSS	20.11.2020 9:12
UNTITLED.RSS	04.08.2020 10:24

Název: NECO
Uložit jako typ: RSLogix Files (*.RSS)
Logix Designer: Logix Designer Files (*.ACD)
Override language setting (not needed in most cases): Current System Default
Create Alias Tag in Logix for existing SLC Symbols:

Export database: Export file types: Logix A.I. A.P.S. Export options...
Save data base as external files:

File PLC Information
Processor Name: UNTITLED Station #: 1d
Processor Type: 1747-L551 5/05 CPU - 16K Mem. 0S501

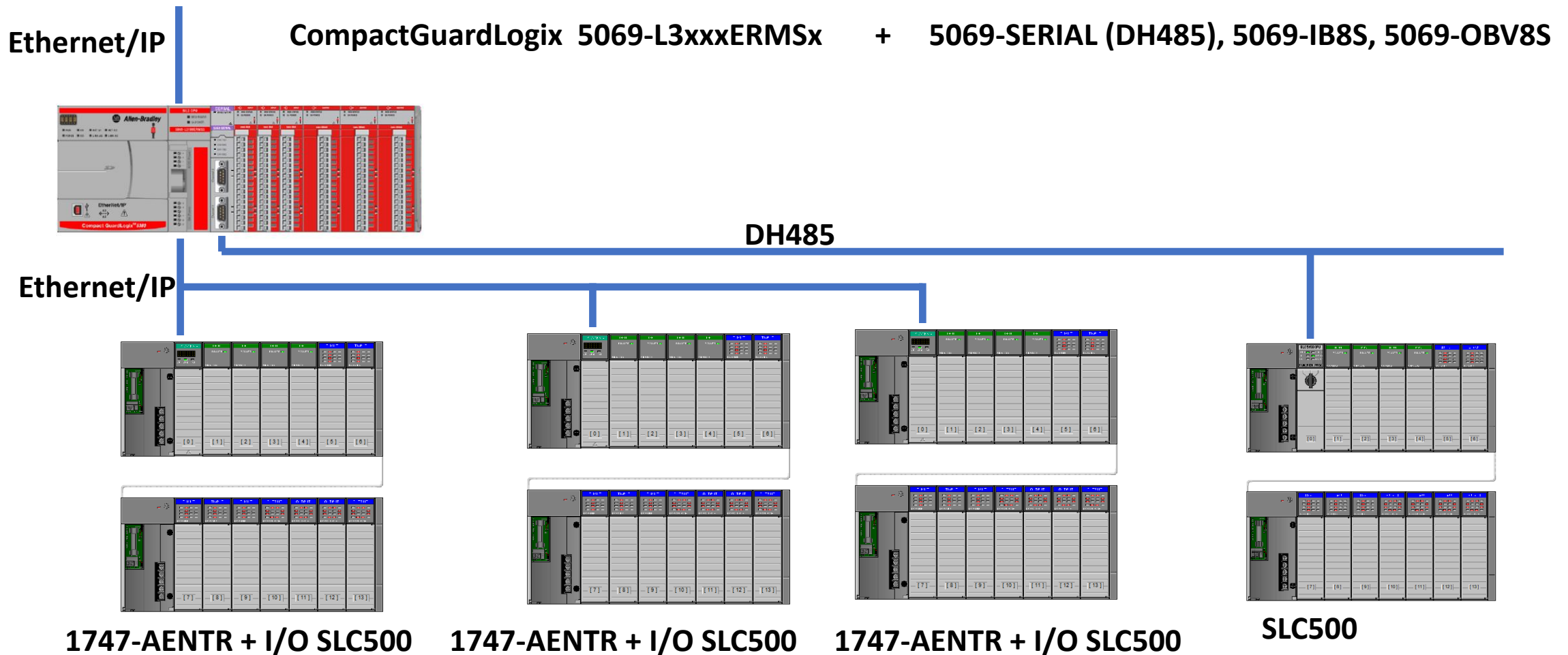
Revision Note: Version: 0

O:2/0 NOVY STAV
1746-OB16
O:2/0 NOVY STAV
1746-OB16
O:2/0
1746-OB16
(END)

File 2

2:0000 ADD READ Disabled

Plynulá modernizace



Jeden CompactGuard Logix může někdy nahradit několik SLC500 procesorů

**Co když budu chtít udělat kompletní výměnu
a v kartách SLC500 se neorientuji ?**



SLC500 Migration Wizard v Integrated Architecture Builder

SLC Migration Module Selection

SLC I/O: **Replace With ControlLogix**

Banks	Chassis Size	Power Supply
1	10	1746-P4
2	0	1746-P4
3	0	1746-P4

Conversion Kit
 Yes No

◆ Migrated Chassis ◆

1746-IM8
1746-IN16
1746-IO12
1746-IO12DC
1746-IO4
1746-IO8
1746-ITB16
1746-ITV16
1746-IV16
1746-IV32
1746-IV8
1746-OA16
1746-OA8
1746-OAP12
1746-OB16
1746-OB16E
1746-OB32
1746-OB32E
1746-OB6EI
1746-OB8
1746-OBP16
1746-OBP8
1746-OG16
1746-OV16
1746-OV32
1746-OV8
1746-OVP16
1746-OW16
1746-OW4
1746-OW8

OK Cancel Help

SLC Migration Module Selection

SLC I/O: **Replace with 1769 CompactLogix**

Banks	Chassis Size	Power Supply
1	10	1746-P4
2	0	1746-P4
3	0	1746-P4

Conversion Kit
 Yes No

◆ Migrated Chassis ◆

1746-IM8
1746-IN16
1746-IO12
1746-IO12DC
1746-IO4
1746-IO8
1746-ITB16
1746-ITV16
1746-IV16
1746-IV32
1746-IV8
1746-OA16
1746-OA8
1746-OAP12
1746-OB16
1746-OB16E
1746-OB32
1746-OB32E
1746-OB6EI
1746-OB8
1746-OBP16
1746-OBP8
1746-OG16
1746-OV16
1746-OV32
1746-OV8
1746-OVP16
1746-OW16
1746-OW4
1746-OW8

OK Cancel Help

5069-FPD

1746-IB16
1746-IM16
1746-NI8
1746-OB16
1746-OA8

SLC Migration Module Selection

SLC I/O: **Replace With CompactLogix 5380**

Banks	Chassis Size	Power Supply
1	10	1746-P4
2	<input type="checkbox"/> 0	1746-P4
3	<input type="checkbox"/> 0	1746-P4

Conversion Kit
 Yes No

Module List:

- 1746-IM8
- 1746-IN16
- 1746-IO12
- 1746-IO12DC
- 1746-IO4
- 1746-IO8
- 1746-ITB16
- 1746-ITV16
- 1746-IV16
- 1746-IV32
- 1746-IV8
- 1746-OA16
- 1746-OA8
- 1746-OAP12
- 1746-OB16
- 1746-OB16E
- 1746-OB32
- 1746-OB32E
- 1746-OB6EI
- 1746-OB8
- 1746-OBP16
- 1746-OBP8
- 1746-OG16
- 1746-OV16
- 1746-OV32
- 1746-OV8
- 1746-OVP16
- 1746-OW16
- 1746-OW4
- 1746-OW8

Chassis Diagram (Top):

Chassis Diagram (Bottom):

◆ Migrated Chassis ◆

5069-IB16
5069-FPD
5069-IA16
5069-FPD
5069-IF8
5069-OB16
5069-FPD
5069-OA16

**Občas se na prezentaci dozvím na co si dát pozor.
Jsem zvědavý na co mě upozorní ve střední a vyšší
třídě řídicích systémů.**



The background of the slide is filled with a dense, overlapping field of 3D question marks. The question marks are rendered in a light gray color with a subtle gradient and soft shadows, giving them a three-dimensional appearance. They are scattered across the entire frame, creating a textured, abstract background.

Rychlost a úzké hrdlo aplikace

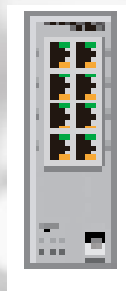
Nešlo by to rychleji ?

1Gbps

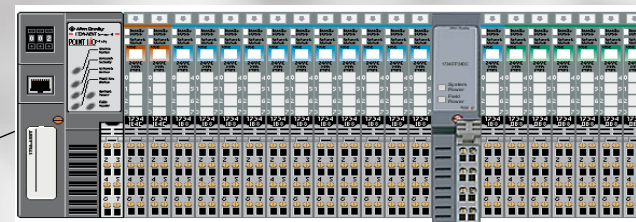


100Mbps

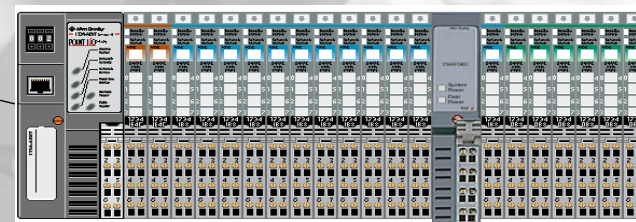
Stratix 2000



100Mbps



1734 Point I/O



DeviceNet
500kpbs
1734-PDN



Čím rychleji a přesněji vzorkuji(měřím) tím přesněji a pohodlněji reguluji

Nový standard

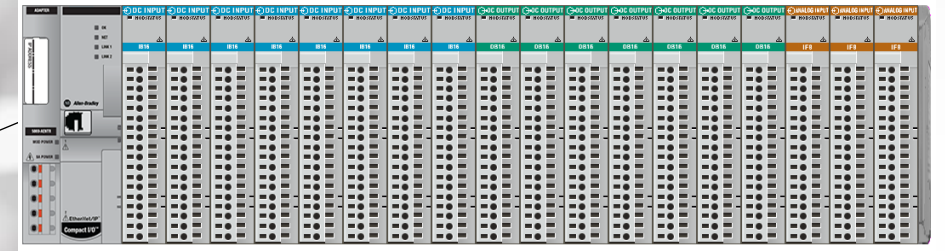


1Gbps

Stratix 5800

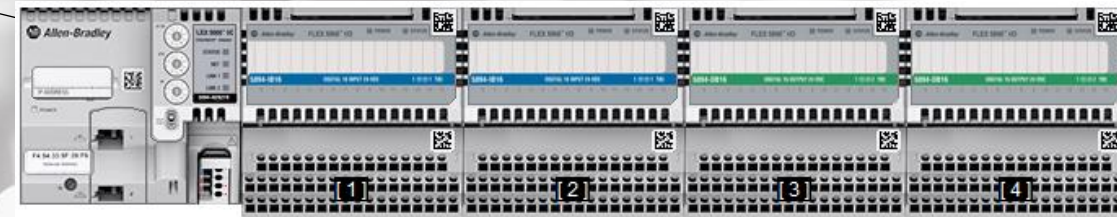


1Gbps

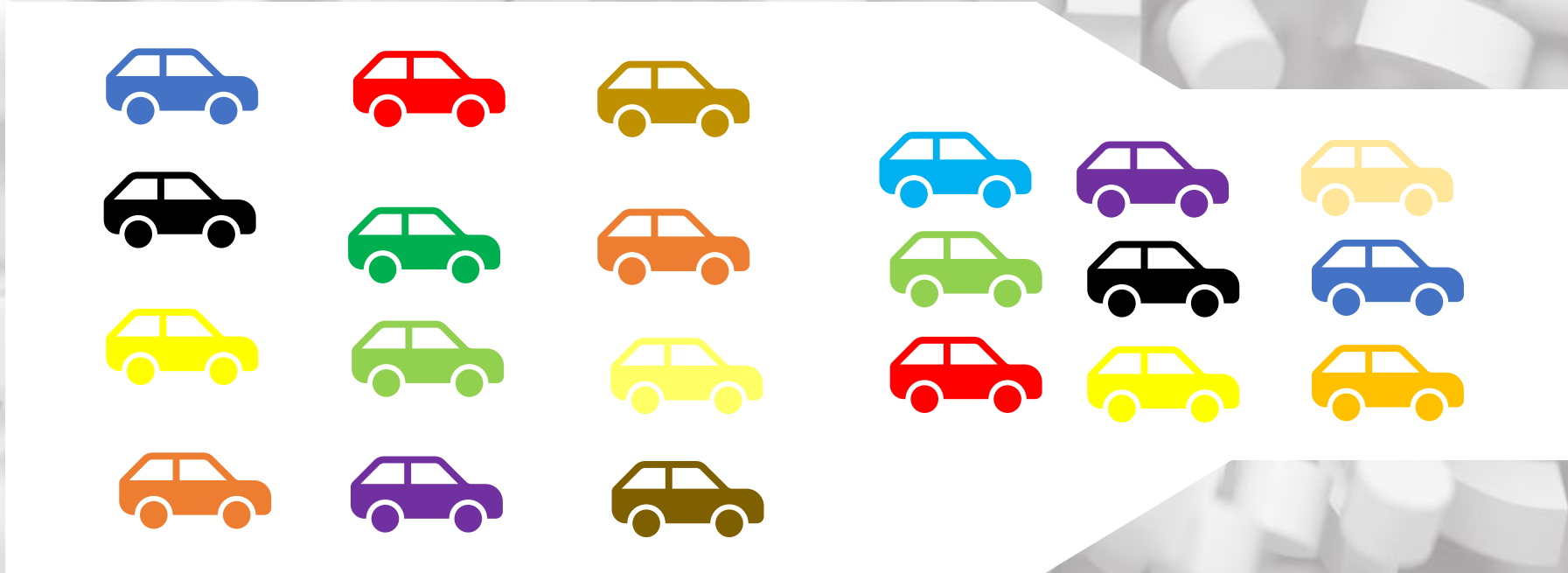


5069 Compact I/O

1Gbps



5094 FLEX 5000



FLEX 5000 vs. Compact 5000 I/O

Taky mohl být konkrétnější a doporučit kterou řadu mám zvolit.



ProposalWorks

Home File User Customers Project Documents Tools Help

Proposal Outline Equipment List Discount Level: 'None' Price Agreement: 'None'

My Products Product Library

Keyword Filter

Catalog Number Filter

RAISE Product Library

- Rockwell Automatic
 - Packaged Soluti
 - Product Selectic
 - Condition Moni
 - Condition Sensc
 - Connection Syst
 - Control Circuit a
 - Drives
 - Drive Systems
 - Hazardous Loca
 - I/O
- Industrial Comp
 - Integrated D
 - 6181P Px
 - 6181X H
 - Non-Display
 - Industrial Mi
 - VersaView 5l
 - VersaVie
 - VersaVie
 - VersaVie
 - VersaVie
 - VersaVie
 - VersaVie
 - VersaView 6
 - VersaVie
 - VersaVie
 - VersaVie
 - Virtualization

SELL CZE (EUR) €785,70

100% Preferred Availability Parts

Image not Available	1	5094-IB32 5094 Digital 32 Input 24 VDC	€343,00 N2 / 25G	Sell 1.0000 M 343,00 Ea. €343,00 Cost 1.0000 M 343,00 Ea. €343,00 Margin 0.00 % 0.00 Ea. €0,00
	2	5094-MB 5094 Mounting Base	€37,50 N2 / 25G	Sell 1.0000 M 37,50 Ea. €37,50 Cost 1.0000 M 37,50 Ea. €37,50 Margin 0.00 % 0.00 Ea. €0,00
Subtotals				Sell 1.0000 M €380,50 Cost 1.0000 M €380,50 Margin 0.00 % €0,00
	3	5069-IB16 5069 Compact I/O 16 Channel 24V DC Sink Input Module	€164,00 N2 / 53F	Sell 1.0000 M 164,00 Ea. €328,00 Cost 1.0000 M 164,00 Ea. €328,00 Margin 0.00 % 0.00 Ea. €0,00
	4	5069-RTB18-SCREW 5069 Compact I/O 18 pins Screw type terminal block kit in a pack of 1 pcs	€38,60 N2 / 53F	Sell 1.0000 M 38,60 Ea. €77,20 Cost 1.0000 M 38,60 Ea. €77,20 Margin 0.00 % 0.00 Ea. €0,00
Subtotals				Sell 2.0000 M €405,20 Cost 2.0000 M €405,20 Margin 0.00 % €0,00

ProposalWorks

Home File User Customers Project Documents Tools Help

Proposal Outline Equipment List Discount Level: 'None' Price Agreement: 'None'

My Products Product Library

Keyword Filter

Catalog Number Filter

RAISE Product Library

- Rockwell Automatic
 - Packaged Soluti
 - Product Selectic
 - Condition Moni
 - Condition Sensc
 - Connection Syst
 - Control Circuit a
 - Drives
 - Drive Systems
 - Hazardous Loca
 - I/O
- Industrial Comp
 - Integrated D
 - 6181P Px
 - 6181X H
 - Non-Display
 - Industrial Mi
 - VersaView 5l
 - VersaVie
 - VersaVie
 - VersaVie
 - VersaVie
 - VersaVie
 - VersaVie
 - VersaView 6
 - VersaVie
 - VersaVie
 - VersaVie
 - Virtualization
 - Accessories
 - Instrumentation
 - Lighting Control
 - Medium Voltage
 - Motion Control
 - Motor Control, I

SELL CZE (EUR) €926,70

100% Preferred Availability Parts

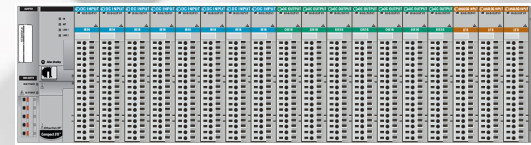
Image not Available	1	5094-OB32 5094 Digital 32 Output 24 VDC	€388,00 N2 / 25G	Sell 1.0000 M 388,00 Ea. €388,00 Cost 1.0000 M 388,00 Ea. €388,00 Margin 0.00 % 0.00 Ea. €0,00
	2	5094-MB 5094 Mounting Base	€37,50 N2 / 25G	Sell 1.0000 M 37,50 Ea. €37,50 Cost 1.0000 M 37,50 Ea. €37,50 Margin 0.00 % 0.00 Ea. €0,00
Subtotals				Sell 1.0000 M €425,50 Cost 1.0000 M €425,50 Margin 0.00 % €0,00
	3	5069-OB16 5069 Compact I/O 16 Channel 24V DC Source Output Module	€212,00 N2 / 53F	Sell 1.0000 M 212,00 Ea. €424,00 Cost 1.0000 M 212,00 Ea. €424,00 Margin 0.00 % 0.00 Ea. €0,00
	4	5069-RTB18-SCREW 5069 Compact I/O 18 pins Screw type terminal block kit in a pack of 1 pcs	€38,60 N2 / 53F	Sell 1.0000 M 38,60 Ea. €77,20 Cost 1.0000 M 38,60 Ea. €77,20 Margin 0.00 % 0.00 Ea. €0,00
Subtotals				Sell 2.0000 M €501,20 Cost 2.0000 M €501,20 Margin 0.00 % €0,00

5094 FLEX 5000



Optika 5094-AENSFPR, 5094-AEN2SFPR
Teplotní rozsah ve verzi XT
Podpora ControlLogix redundance V33
Cena adaptéru 5094-AENTR
Nižší cena digitálních modulů (32 bodové)
Nižší cena safety modulů (16 bodové)
Safety relé výstup 5094-OW4IS
Interconnect kabel 5094-Cexx
RIUP (vyjímání a vkládání pod napětím)
PRP – Parallel Redundancy Protocol

5069 Compact I/O



IB16F (velmi rychlý modul „Fast“)
OB16F (velmi rychlý modul „Fast“)
Nižší cena analogových modulů
Lokální procesor 5069-Lxxx
4 moduly 5069 jsou užší než 1 modul 5094
4x22mm < 94mm



Stratix 5800

- Všechny porty s podporou 1Gb
 - Až 26 portů
 - PoE
 - Podpora IT(informační technologie)
 - Podpora OT(operační technologie)
 - Možnost modularity
-
- Studio 5000 Add-on Profile
 - Vestavěná Cisco® technologie

Milník

**Doba
Gigabitová**

Budoucí mainstream střední třídy

Kat. č.	Celkem portů	RJ45 porty	PoE	SFP sloty	Modulární	Firmware typ	Advanced support
Switche							
1783-MMS10B	10	8x1Gb	-	2x1Gb	Ne	Layer 2	Ne
1783-MMS10BE	10	-	8x1Gb	2x1Gb	Ne	Layer 2	Ne
1783-MMS10	10	8x1Gb	-	2x1Gb	Ano	Layer 2	Ne
1783-MMS10E	10	-	8x1Gb	2x1Gb	Ano	Layer 2	Ne
1783-MMS10EA	10	-	8x1Gb	2x1Gb	Ano	Layer 2	Ano
1783-MMS10R	10	8x1Gb	-	2x1Gb	Ano	Layer 3	Ne
1783-MMS10ER	10	-	8x1Gb	2x1Gb	Ano	Layer 3	Ne
1783-MMS10EAR	10	-	8x1Gb	2x1Gb	Ano	Layer 3	Ano
Rozšiřující moduly							
1783-MMX8T	8	8x1Gb	-	-	-	-	Ne
1783-MMX8E	8	-	8x1Gb	-	-	-	Ne
1783-MMX8EA	8	-	8x1Gb	-	-	-	Ano
1783-MMX8S	8	-	-	8x1Gb	-	-	Ne
1783-MMX8SA	8	-	-	8x1Gb	-	-	Ano
1783-MMX6T2S	8	6x1Gb	-	2x1Gb	-	-	Ne
1783-MMX16T	16	16x1Gb	-	-	-	-	Ne
1783-MMX16E	16	-	16x1Gb	-	-	-	Ne
1783-MMX14T2S	16	14x1Gb	-	2x1Gb	-	-	Ne

Omezení pro použití rozšiřujících modulů:

- 1. Pouze jeden rozšiřující modul může být spárován s jedním modulárním switchem.**
- 2. Rozšiřující moduly s porty PoE jsou podporovány pouze u modulárních switchů s porty PoE.**
- 3. Rozšiřovací moduly s podporou pokročilých funkcí jsou podporovány pouze u modulárních switchů s podporou pokročilých funkcí.**

Zkontrolujte si své nabídky a řešení...

1769-L18ERM-BB1B vs. 5069-L306ERMS3

RA - Integrated Architecture Builder - IAB_proj

File Action Option View Help

Workspace

- Workspace 'IAB_proj'
 - CompactLogix001
 - CompactLogix002

Wizard View Hardware View - CompactLogix001

Configure chassis Connections Power supplies

Project Bill Of Material

Qty	Catalog #	Description	(€ - EUR) Unit Price	(€ - EUR) Price	F
Hardware					
Compact Logix001					
001	1769-L18ERM-BB1B	CompactLogix 5370 L1 Controller, 2 EtherNet/IP ports, 512KB memory, 16 DC in, 16 DC out, up to 8 1734 I/O expansi...	1.800,00	1.800,00	F
			Subtotal:	€ 1.800,00	
Compact Logix002					
001	5069-L306ERMS3	Compact GuardLogix5380 Safety Controller, SIL3/PLe, 0.6MB Standard & 0.3MB Safety Memory, 16 nodes, 8 I/Os, 2 ...	1.350,00	1.350,00	F
			N/A	N/A	F
001	5069-RTB64-SCREW	Power terminal RTB kit for CompactLogix 5380 Controllers and 5069-AEN2TR. Contains both 4 and 6 pin Screw type RTB	21,10	21,10	F
001	5069-IB16	5069 Compact I/O 16 Channel 24VDC Sink Input Module, 100µs response, up to 500hz simple counter	164,00	164,00	F
002	5069-RTB18-SCREW	5069 Compact I/O 18 pins Screw type terminal block kit	38,60	77,20	F
001	5069-OB16	5069 Compact I/O 16 Channel 24VDC Source Output Module, 100µs response, 2 tier fault mode, hold last state	212,00	212,00	F
			Subtotal:	€ 1.824,30	
			Total:	€ 3.624,30	

The list prices shown in this tool are reference points used by your distributor or Rockwell Automation to calculate your extended net prices and do not include applicable discounts and taxes. To obtain your extended net pricing for products, contact Rockwell Automation or your authorized distributor.

Your project has errors and/or warnings. This means that your system may or may not work as expected. You need to review and resolve these issues to your satisfaction by going to the Project Checker tab of the Project Completeness Wizard and the Errors/Warnings tab of the Communications Details dialog to see the errors and/or warnings.

Show all slot numbers Organized BOM Consolidated BOM Positional BOM * Included in Bulk Cable Section
 Show only PlantPAx System Elements and I/O ** Included in Hardware Section
\$ Not Available For Sale for all COMING SOON description product catalogs

Save to XLS Save to XML Print Close Help

Device List

5069-OB16 Search Clear Hide List Filters Filtering: OFF

- Controllers
 - 5370 L1 Controllers (w/Point I/O)
 - 5370 L2 Controllers

Description:
CompactLogix 5370 L1 Contro

VELKÉ ŘÍDICÍ SYSTEMY

Nové procesory určené pro řízení procesních aplikací



	5069-L320ERP	5069-L340ERP
Studio 5000 Logix Designer	Verze 33 a vyšší	Verze 33 a vyšší
Uživatelská paměť	2MB	4MB
Max. počet Ethernet/IP nódů	40	90



	1756-L81EP	1756-L83EP	1756-L85EP
Studio 5000 Logix Designer	Verze 33 a vyšší	Verze 33 a vyšší	Verze 33 a vyšší
Uživatelská paměť	3MB	10MB	40MB
Max. počet Ethernet/IP nódů	100	250	300

ControlLogix 5580 a Redundance V33

Rekapitulace

ControlLogix 5580 a Redundance V33

Redundance ve verzi 33 spolu s ControlLogix 5580 přináší razantní snížení ceny vlastního řešení, protože již není nutné používat dvojnásobně velkou paměť pro procesory. Dále došlo ke sjednocení firmware pro procesory řady 1756-L8xE a každý firmware má podporu redundance.

1756-L81E	4010,00EUR x 2 =	8 020,00EUR
1756-L82E	5800,00EUR x 2 =	11 600,00EUR



ControlLogix 5580 a Redundance V33

Klíčové vlastnosti:

všechny typy procesorů 5580 s výjimkou bezpečnostních variant (Procesní Ano / Safety Ne)

Jednoduchá konfigurace ve Studiu 5000 Logix Designer

Redundantní modul 1756-RM2 používá přenosovou rychlost 1Gbps

Duální optické spojení mezi moduly 1756-RM2 zvyšuje odolnost proti poruše

Uvedení do provozu ve stylu plug-and-play a konfigurace, která nevyžaduje rozsáhlé programování.

Podpora sítě Ethenet/IP a implentace DLR

Podpora paralelně redundantního protokolu PRP (Novinka)

Přepínání probíhá rychlostí 20 ms.

V případě Logix tag based alarmů, je možné použít až 8000 těchto alarmů v procesoru.

V případě instrukčních alarmů je možné použít až 3000 těchto alarmů, pro časově nejkritičtější alarmy. Tento typ alarmů je paměťově náročnější než Logix based alarmy.

Podpora CIP Synch pro nastavení přesného času napříč redundantním systémem a aplikací.

Připojení vstupů/výstupů a periférií jen po síti Ethernet/IP (existují výjimky, které připojit nelze)

Podpora redundantních vstupů/výstupů řady 1715

Podpora FLEX 5000 (kat. číslo 5094) (Novinka)

Podpora komunikace pomocí „open socket“ umožňuje připojit zařízení, které přímo Ethernet/IP nepodporuje jako jsou například různé čtečky čárového kódu, RFID atd.

ControlLogix 5580 a Redundance V33

Vlastnosti, které nejsou implementovány/podporovány:

Připojení vstupů/výstupů řady Compact 5000 I/O (kat. číslo 5069-AENTR)

Připojení vstupů/výstupů řady Compact I/O (kat. číslo 1769-AENTR)

Připojení vstupů/výstupů řady SLC500 (kat. číslo 1747-AENTR)

Podpora vestavěného Gigabitového portu na procesoru.

Podpora sítí DeviceNet, ControlNet, Remote I/O, DH+

Zasílání zpráv do starších typů řídicích systémů PLC2, PLC5 a SLC500

Bezpečnostní komunikace IEC62443-4-2

Polohování

Event Task

Podpora pro konzumované unicast spojení (tzv. connections)

SequenceManager



ControlLogix 5580 Redundant Controller

For Use in High Availability Systems



User Manual

Original Instructions

Uživatelský manuál jak optimalizovat sestavu a aplikační program pro ještě vyšší výkon.

**FACTORY
TALKVIEW SE
V12**

FactoryTalk View SE V12

1.Data Grid object

2.Server Side Script

3.Cenové zvýhodnění

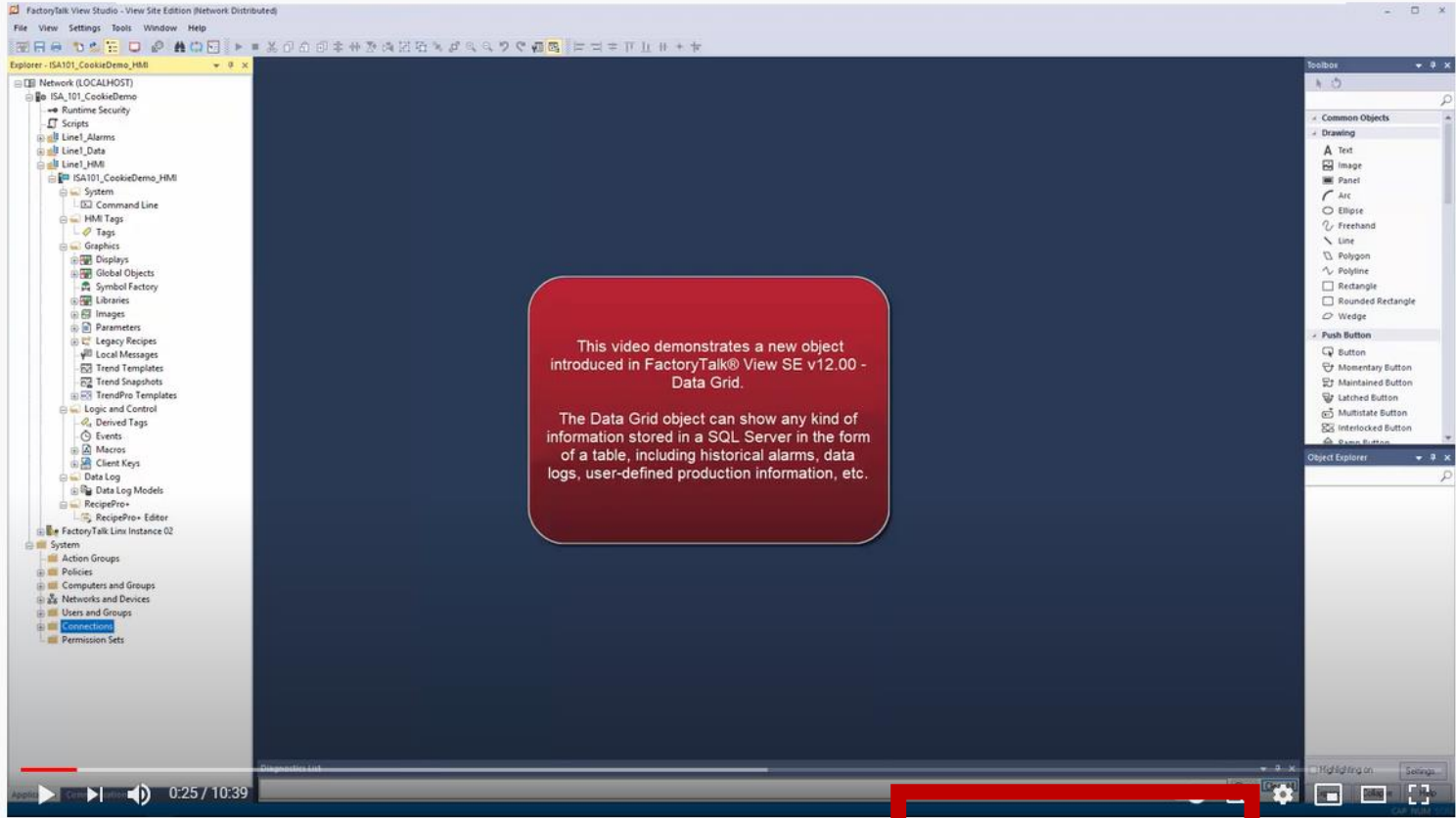
- Bundle**

- Redundantní Server**

FactoryTalk View Site Edition Data Grid object

YouTube CZ

Hledat



FactoryTalk View Studio - View Site Edition (Network Distributed)

File View Settings Tools Window Help

Explorer - ISA101_CookieDemo_HMI

Network (LOCALHOST)

- ISA_101_CookieDemo
 - Runtime Security
 - Scripts
 - Line1_Alarms
 - Line1_Data
 - Line1_HMI
 - ISA101_CookieDemo_HMI
 - System
 - Command Line
 - HMI Tags
 - Tags
 - Graphics
 - Displays
 - Global Objects
 - Symbol Factory
 - Libraries
 - Images
 - Parameters
 - Legacy Recipes
 - Local Messages
 - Trend Templates
 - Trend Snapshots
 - TrendPro Templates
 - Logic and Control
 - Derived Tags
 - Events
 - Macros
 - Client Keys
 - Data Log
 - Data Log Models
 - RecipePro
 - RecipePro+ Editor
 - FactoryTalk Line1 Instance 02
 - System
 - Action Groups
 - Policies
 - Computers and Groups
 - Networks and Devices
 - Users and Groups
 - Connections
 - Permission Sets

Toolbox

- Common Objects
- Drawing
 - Text
 - Image
 - Panel
 - Arc
 - Ellipse
 - Freehand
 - Line
 - Polygon
 - Rectangle
 - Rounded Rectangle
 - Wedge
- Push Button
 - Button
 - Momentary Button
 - Maintained Button
 - Latched Button
 - Multistate Button
 - Interlocked Button
 - Group Button

Object Explorer

0:25 / 10:39

Introduction to FactoryTalk View Site Edition Data Grid object

887 zhlédnutí • 11. 11. 2020

Rockwell Automation
31,9 tis. odběratelů

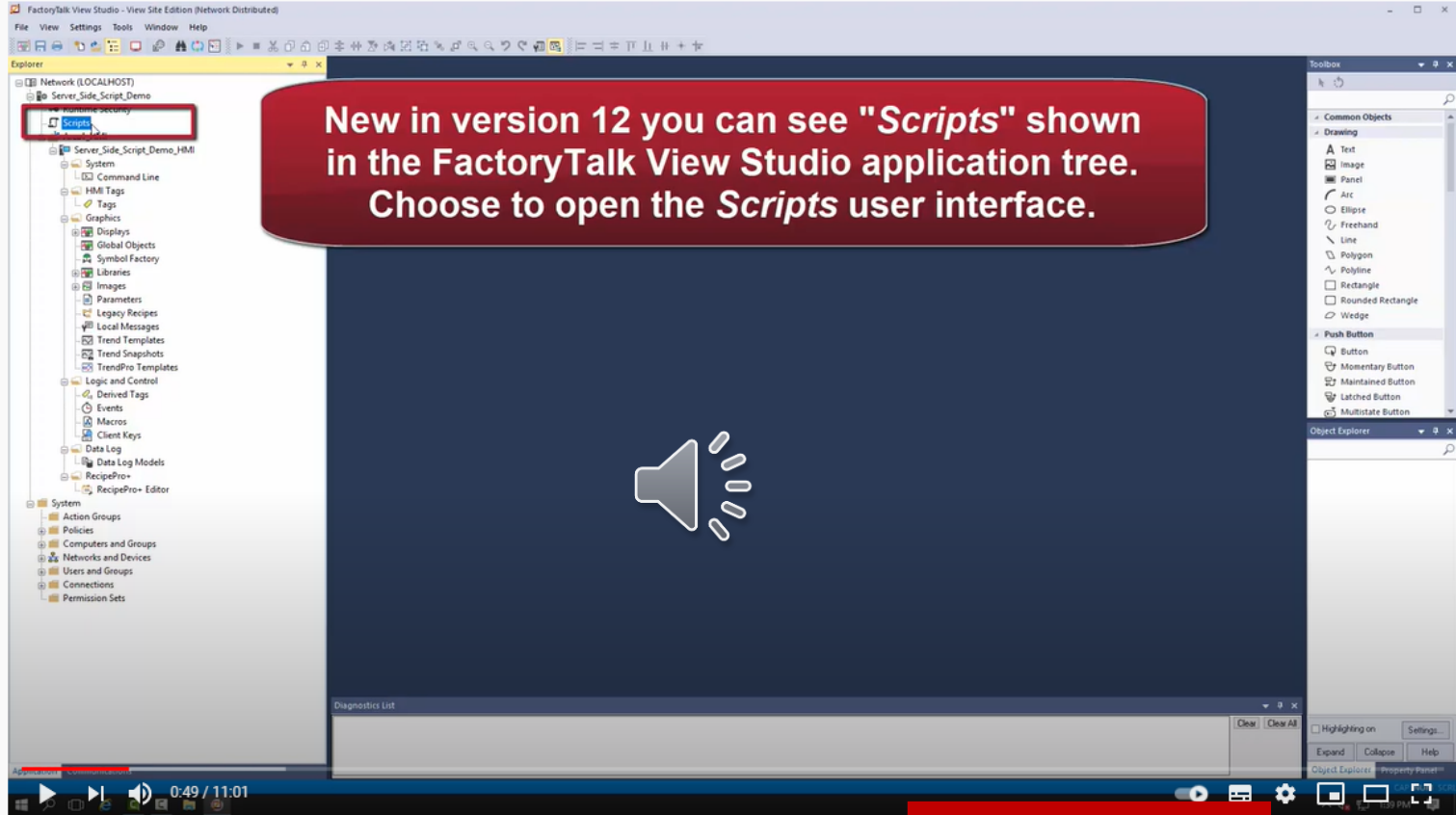
This video demonstrates how to create and use a Data Grid object in FactoryTalk View SE. For more information on FactoryTalk View SE, visit <https://www.rockwellautomation.com/en...>

MUST SEE !

ODEBÍRAT

FactoryTalk View Site Edition Server Side Scripts


YouTube CZ Hledat



New in version 12 you can see "Scripts" shown in the FactoryTalk View Studio application tree. Choose to open the *Scripts* user interface.

Introduction to FactoryTalk View Site Edition Server Side Scripts

408 zhlédnutí • 17. 3. 2021

 **Rockwell Automation**
31,9 tis. odběratelů

This video demonstrates how Server Side Scripts work with FactoryTalk® View Site Edition (SE). For more information on FactoryTalk View SE, visit <https://www.rockwellautomation.com/en...>

MUST SEE !

ULOŽIT ODEBÍRAT

Škoda že těch výukových videí nemají více





Creating a FactoryTalk View SE Application

46 304 zhlédnutí • 5. 7. 2017

👍 102 💬 11 ➦ SDÍLENÍ 📌 ULOŽIT ...



Rockwell Automation
31,9 tis. odběratelů

Learn about the different types of FactoryTalk View SE applications, and how to create a new distributed FactoryTalk View SE application.

ODEBÍRAT

FactoryTalk View Site Edition

Rockwell Automation - 1 / 46



- ▶ **Creating a FactoryTalk View SE Application**
Rockwell Automation
4:47
- 2 **Creating a FactoryTalk View SE Display**
Rockwell Automation
6:07
- 3 **Create your first reusable pop-up display in FactoryTalk View SE**
Rockwell Automation
5:56
- 4 **Creating a FactoryTalk View SE Client**
Rockwell Automation
4:31
- 5 **Create your first controller reference using FactoryTalk View Studio**
Rockwell Automation
7:00
- 6 **Introduction to FactoryTalk Alarming with FactoryTalk View SE**
Rockwell Automation
5:28
- Creating an Event in FactoryTalk Alarms and Events**

PART: 07 Java Library Management System Project In Netbeans...
1BestCsharp blog
85 tis. zhlédnutí • před 1 týdnem
1:42:37

Mix – Rockwell Automation
YouTube
Mix (+)



Unforgettable Classic World Cup Matches
Vanemas2
1,2 mil. zhlédnutí • před 4 měsíci
10:17

Dobytí severního pólu - 1988 - kvalitnější verze
GOLEM
135 tis. zhlédnutí • před 3 týdny
1:41:37

FactoryTalk View SE 46 kapitol



FactoryTalk View Site Edition – cenové zvýhodnění „Bundle“

[Products](#) [My Subscriptions](#) [Order History](#) [Help](#) [Temporary Activations](#) [My Cart \(4\)](#) 

[Home](#) / [FactoryTalk View Distributed HMI](#)

FactoryTalk View Distributed HMI

[View Product Description](#)

The Connected Enterprise


1. Choose Your Package

FactoryTalk View SE 10-Client Bundle

The FactoryTalk View SE 10-Client Bundle provides everything you need to run a distributed system with up to 10 HMI client stations. Included in the bundle is a FactoryTalk View SE Server with unlimited displays, 10 View SE Clients, and 1 FactoryTalk ViewPoint Client for a web browser-based HTML client connection. Bundle also includes both RSLinx Classic for View and FactoryTalk Linx.

FactoryTalk View SE 25-Client Bundle

The FactoryTalk View SE 25-Client Bundle provides everything you need to run a distributed system with up to 25 HMI client stations. Included in the bundle is a FactoryTalk View SE Server with unlimited displays, 25 View SE Clients, and 1 FactoryTalk ViewPoint Client for a web browser-based HTML client connection. Bundle also includes both RSLinx Classic for View and FactoryTalk Linx.



FactoryTalk View Site Edition – cenové zvýhodnění „Redundantní server“

FactoryTalk View SE Unlimited Display Redundant Server Subscription

Enables secondary FactoryTalk View SE Server in a redundant pair. Requires primary Server of matching size.

Quantity:

ADD TO CART

Nová katalogová čísla pro redundantní servery.

Ceníková cena redundatního serveru je 50% ceny ceníkové ceny primárního serveru stejné velikosti.

The logo for PlantPAx is centered on a background of overlapping, wavy, semi-transparent shapes in various shades of red and orange. The text "PlantPAx" is white and enclosed in a thin white rectangular border.

PlantPAx

PlantPAx v5.0

DCS řešení od Rockwell Automation



Workspace

- Control and Information Products Guide
- Integrated Architecture Builder Release Notes
- Application Solutions
- ArmorStart Distributed Motor Controllers
- Distributed I/O
- Logix Environment
- NetLinx Open Network Architecture
- On-Machine Connectivity
- PanelView Operator Interface Terminals
- PLC-5
- PowerFlex Drives
- SLC500
- SLC500 User Documentation
- Encompass Partner Products
- PlantPAx Process Automation
 - Reference Manual
- Micro800

Create New Workspace

- Generic Workspaces
 - Blank
 - with Hardware
 - with Network
 - with Software
- Integrated Architecture Workspaces
 - Project Design Assistant
 - EtherNet/IP Capacity Subsystem
 - ControlLogix Subsystem
 - CompactLogix Subsystem
 - Distributed I/O Subsystem
- Connected Components Workspaces
 - Micro800 Subsystem
- Migration Workspaces
 - PLC-5 Migration Wizard
 - SLC 500 Migration Wizard
 - Distributed I/O Migration Wizard
 - MicroLogix Migration Wizard
- Process Automation Workspaces
 - PlantPAx System Estimator

Workspace Name:

IAB_proj

Location:

C:\Users\mikovsky\Documents\Rockwell\IAB\Projects\IAB_proj

Set as the default location

Enable Workspace Autosave 1 Minutes

Description:

Creates a new workspace with a PlantPAx System Estimator wizard. PlantPAx is Rockwell Automation's process automation system. It combines the plant-wide control technologies and unmatched scalability of Integrated Architecture with all the core capabilities expected in a world-class DCS. The PlantPAx System Estimator creates a new workspace and opens a wizard to guide you through selecting system elements and sizing the system based on the rules and recommendations from PlantPAx System characterization. The following items will be created based on your inputs: a supervisory EtherNet network with all Servers, Operator and Engineering Workstations and controller chassis; a listing of required software catalog numbers; a ControlNet or Ethernet network for each controller that includes all I/O requirements; and various Hardware views to support the various devices and chassis.

OK

Cancel

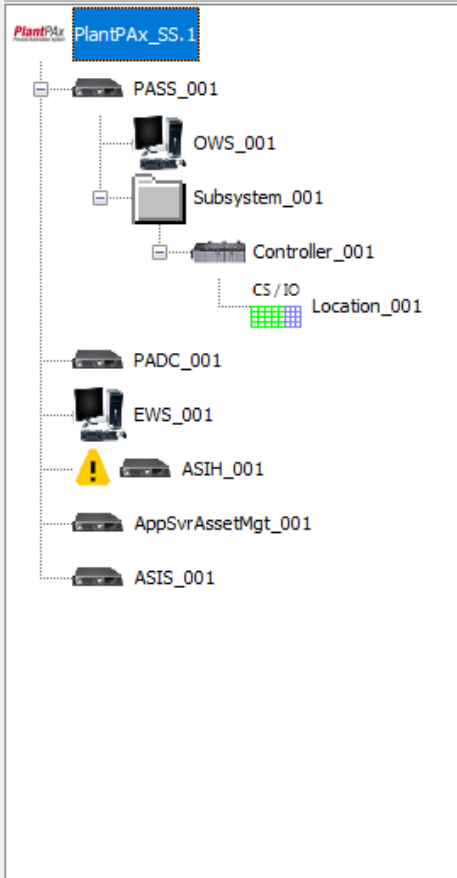
Help

System Name Controllers PASS Servers OWS Clients

Digital Inputs Digital Outputs Analog Inputs Analog Outputs Alarms

PlantPax

Distributed Control System



System Info

Project ID

Rev

Reference ID

Project Name

Contact Name

System Preferences

PlantPax System Preferences v5.0

Default I/O Entry Method

I/O Quantity

Control Strategy

FactoryTalk Directory

Default Network Configuration

Use Existing Core Switch

Core Switch

Service Contract & Software License Options:

System Summary

Number of PASSs	<input type="text" value="1"/>	Number of HMI Servers	<input type="text" value="1"/>
Network Stations	<input type="text" value="0"/>	Number of Data and Alarm Servers	<input type="text" value="1"/>
Number of OWSs	<input type="text" value="1"/>	Server Tag Based Alarms	<input type="text" value="0"/>
Number of OWS Clients	<input type="text" value="1"/>	Logix Tag Based Alarms	<input type="text" value="0"/>
Number of EWSs	<input type="text" value="1"/>	Number of Historian Tags	<input type="text" value="67"/>
Number of Controllers	<input type="text" value="1"/>	Total Control Strategies	<input type="text" value="0"/>
		Total Tags on Scan	<input type="text" value="1021"/>

System I/O Summary

	New I/O	Existing I/O	MCC/MCD
Number of Digital Inputs	<input type="text" value="0"/>	<input type="text" value="0"/>	VSDs <input type="text" value="0"/>
Number of Digital Outputs	<input type="text" value="0"/>	<input type="text" value="0"/>	SMCs <input type="text" value="0"/>
Number of Analog Inputs	<input type="text" value="0"/>	<input type="text" value="0"/>	OLRs <input type="text" value="0"/>
Number of Analog Outputs	<input type="text" value="0"/>	<input type="text" value="0"/>	

Virtualization Options

Employ a Virtual Architecture

Include Virtual Image Templates on BOM

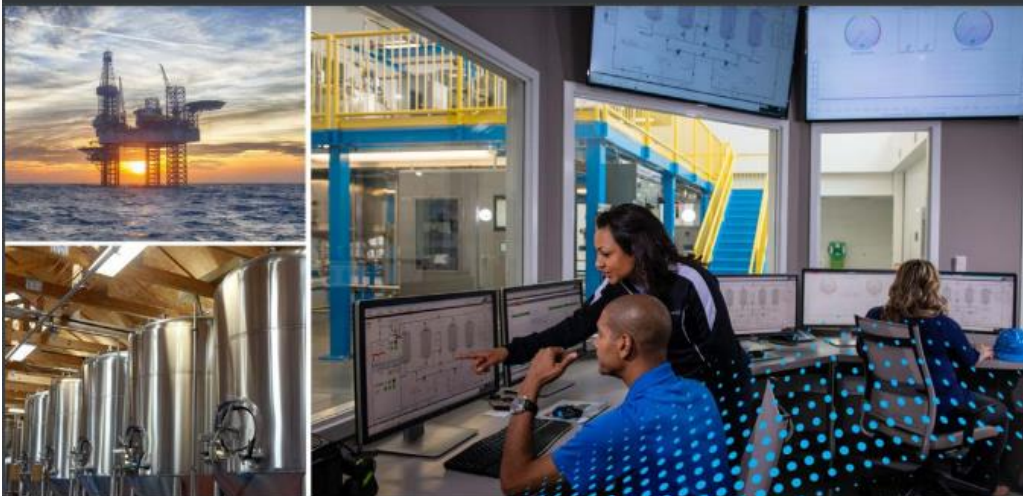
Minimum Virtual Requirements

Physical Cores

RAM Memory GB

Storage Capacity GB

Generate Bill-of-Material upon Finish



PlantPax Distributed Control System

PlantPax
Distributed Control System



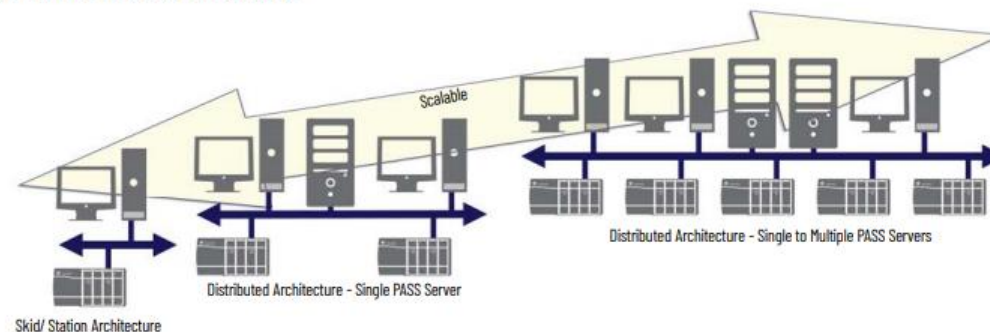
Selection Guide

Original Instructions

Scalable Architectures

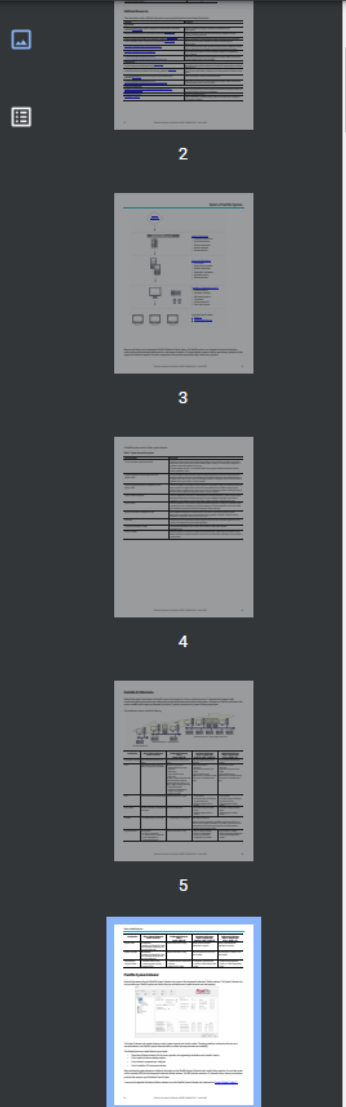
Rockwell Automation characterizes the PlantPax system that is based on its size or architecture class. A 'characterized' (system-tested) classification yields system performance data and recommended hardware and software configurations. The classes of PlantPax architecture offer system scalability while organizing Integrated Architecture® products consistent with process industry expectations.

The architecture classes include the following:



Consideration	Skid or Station Architecture (small < 2000 I/O)	Distributed Architecture PASS-C (small < 2000 I/O)	Distributed Architecture Single or Multiple PASS (medium= 2,000...10,000 I/O)	Distributed Architecture Single or Multiple PASS (large = 10,000+ I/O)
FactoryTalk® Directory	Place FactoryTalk Directory on the station	Place FactoryTalk Directory on the PASS-C	Place FactoryTalk Directory on its own PASS	Place FactoryTalk Directory on its own PASS
PASS	Single station serves as PASS and OWS in an independent workstation.	One PASS-C that includes: <ul style="list-style-type: none"> FactoryTalk Directory server HMI server Data server Alarm and Event server EWS / OWS The PASS-C supports functions that would otherwise be hosted on separate application servers. The PASS-C single computer also hosts: <ul style="list-style-type: none"> FactoryTalk Historian AppServ-Asset Management AppServ-VantagePoint AppServ-Info (SQL) 	One PASS that includes: <ul style="list-style-type: none"> HMI server Data server (as many as 2 per PASS) Alarm and Event server Additional PASS, as needed (as many as 10 servers or redundant server pairs).	One PASS that includes: <ul style="list-style-type: none"> HMI server Data server (as many as 2 per PASS) Alarm and Event server Additional PASS as needed (as many as 10 servers or redundant server pairs)
EWS	1 EWS required; provided separately	Included within PASS-C image	<ul style="list-style-type: none"> 1 EWS required Can have as many as 5 EWS that are active and in use Additional AppServ-EWS as needed 	<ul style="list-style-type: none"> 1 EWS required Can have as many as 5 EWS that are active and in use Additional AppServ-EWS as needed
OWS (clients)	Provided separately via independent workstation	Maximum 10 OWS clients	<ul style="list-style-type: none"> Can have as many as 120 OWS clients Additional AppServ-OWS as needed 	<ul style="list-style-type: none"> Can have as many as 120 OWS clients Additional AppServ-OWS as needed
Controller	1...5 CompactLogix or ControlLogix	1...5 CompactLogix or ControlLogix	ControlLogix Architecture	ControlLogix Architecture

Actual count varies depending on application requirements. There is no



PlantPax System Estimator

Rockwell Automation offers the PlantPax System Estimator tool as part of the Integrated Architecture® Builder software. The System Estimator tool lets you define your PlantPax system and verifies that your architecture and system elements are sized properly.

The System Estimator tool provides helps you select system elements and size the system. The sizing guidelines are based on the rules and recommendations from PlantPax system characterization to achieve known performance and reliability.

The following items are created based on your inputs:

- Supervisory Ethernet network with all servers, operator, and engineering workstations and controller chassis
- List of required software catalog numbers
- List of network components per subsystem
- List of controllers, I/O, and process devices

After selecting the system elements as defined in this guide, use the PlantPax System Estimator tool to modify their properties. You can then create a bill of materials (BOM) with the Integrated Architecture Builder software. The BOM includes controllers, I/O, networks, drives, devices, and software products that comprise your Distributed Control System.

To access the Integrated Architecture Builder software to use the PlantPax System Estimator tool, download the [Product Selection Toolbox™](#).

Integrated ArchitectureBuilder obsahuje vestavěné „učebnice / cvičení / lekce“ napsané tak, aby je uživatel mohl absolvovat zcela sám s minimálními počátečními znalostmi.

LEARN

Labs Expand All

Adding an Ethernet/IP Network		09.02.2017	PDF	4.56MB	45 minutes
Adding EtherNet/IP Device Level Topologies		09.02.2017	PDF	1.34MB	45 minutes
Adding a ControlNet Network		09.02.2017	PDF	1.65MB	30 minutes
Adding Auxiliary, Control, and 3-Phase Power Networks	UPDATED	15.06.2018	PDF	3.42MB	45 minutes

Migration

Title	Status	Date	Type	Size	Duration
Distributed I/O Migration		09.02.2017	PDF	3.09MB	30 minutes
PLC-5 to ControlLogix Migration	UPDATED	13.03.2020	PDF	2.70MB	30 minutes
SLC to CompactLogix Migration	UPDATED	13.03.2020	PDF	3.53MB	30 minutes

Advanced Functionality

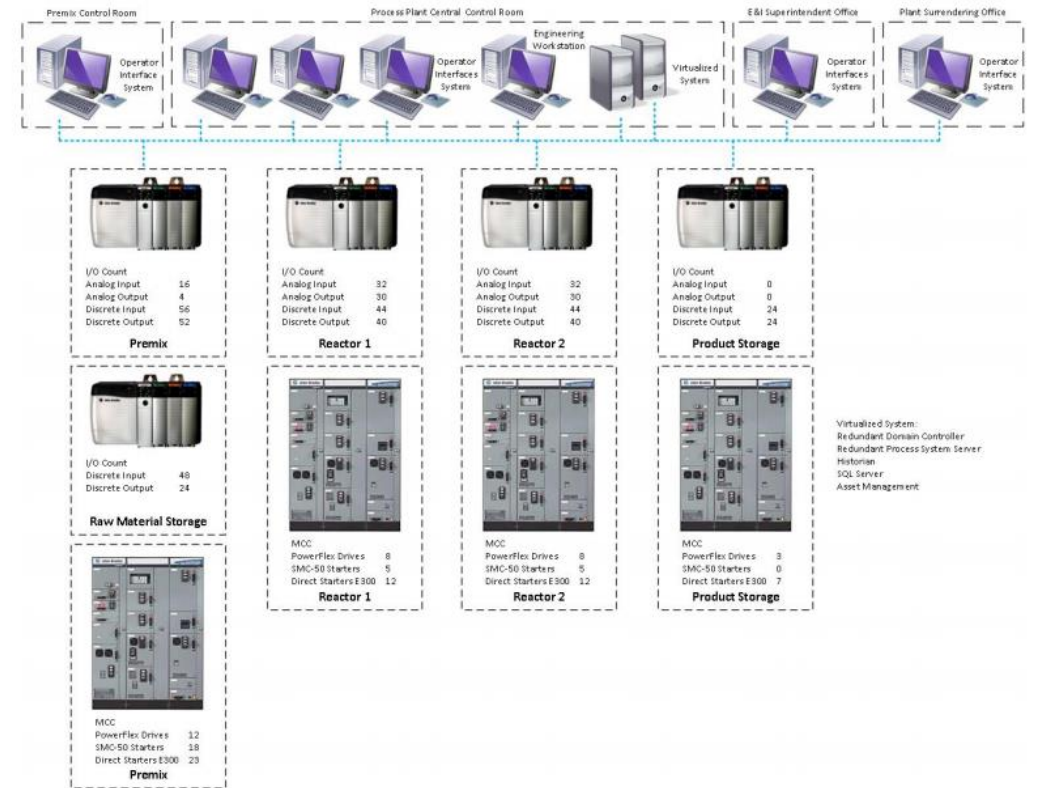
Title	Status	Date	Type	Size	Duration
Advanced Communication Details	UPDATED	13.03.2020	PDF	3.30MB	45 minutes
Checking System Performance		09.02.2017	PDF	4.11MB	60 minutes
CIP Motion Configurations		30.03.2017	PDF	2.33MB	30 minutes
Adding a PlantPAx System	UPDATED	03.09.2020	PDF	3.62MB	60 minutes
Complete Your Architecture		09.02.2017	PDF	1.50MB	30 minutes
Adding Control and Field Power Supplies		18.01.2013	PDF	1.13MB	30 minutes
SERCOS Motion Configurations		30.03.2017	PDF	1.69MB	20 minutes

Search... Search

PlantPax System Design and Estimation Tools



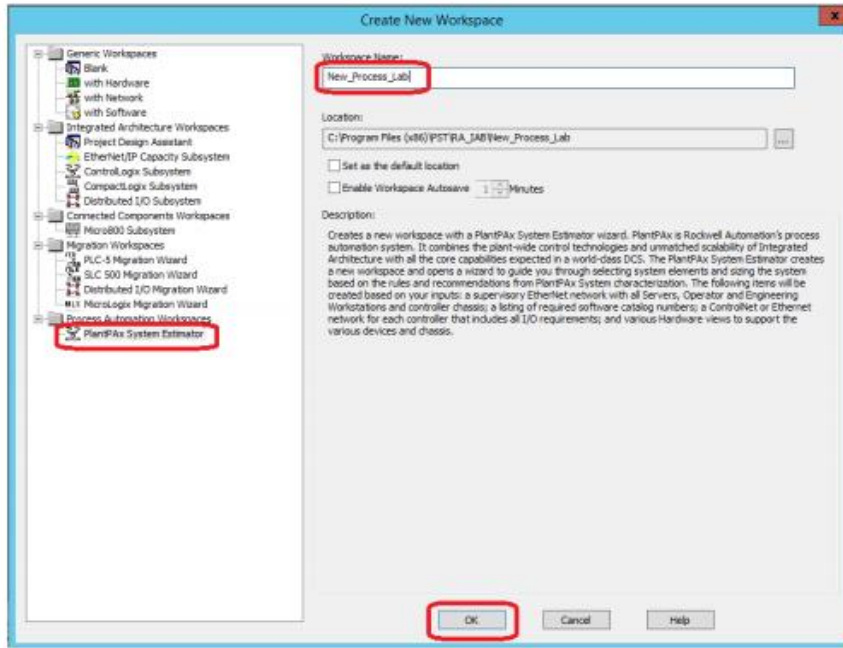
PSE v5.0
September 2020



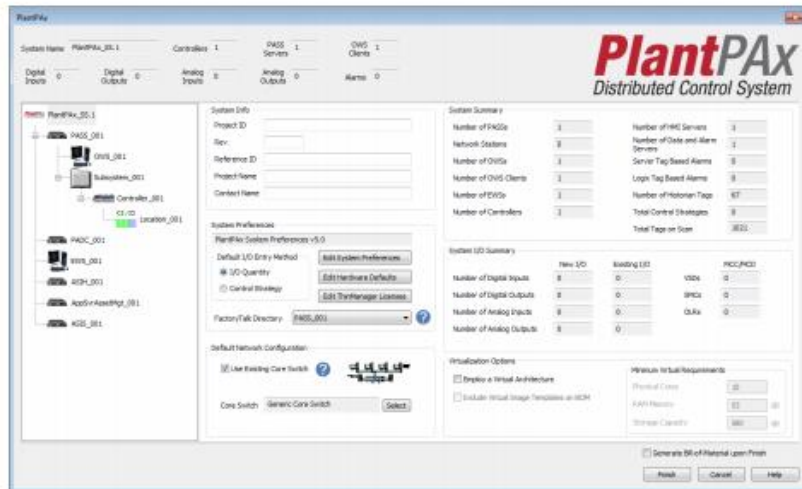
Note: For PowerFlex Drivers in this lab we can use PF755.

Follow the steps below to configure this project in IAB.

4. In the Create a **New Workspace** dialog, select **Process Automation Workspaces > PlantPAX System Estimator** and type in the Workspace Name 'New_Process_Lab', Click **OK**.



IAB Launches the PlantPAX wizard.



Učebnice vás vede krok za krokem

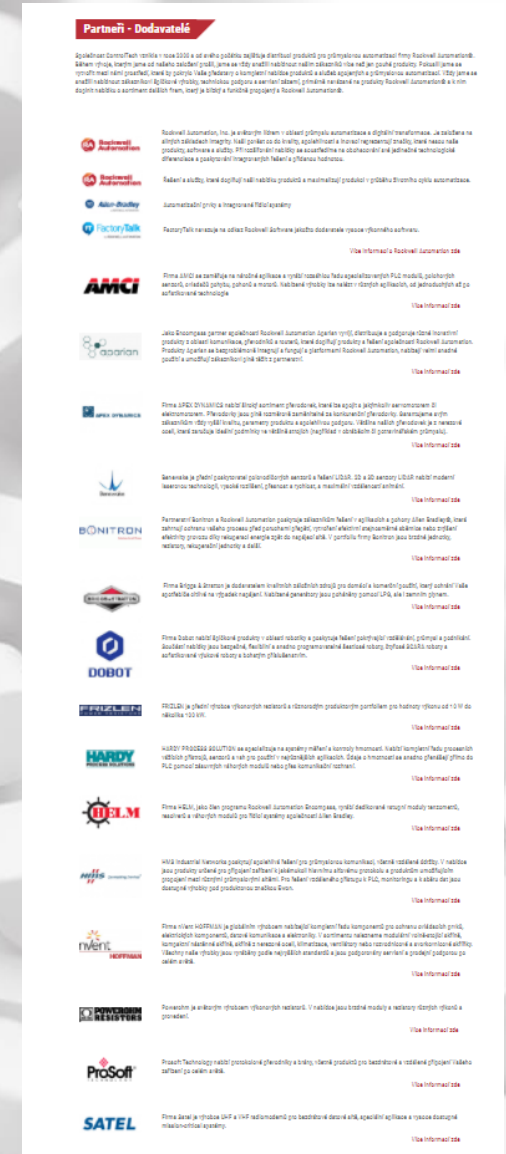
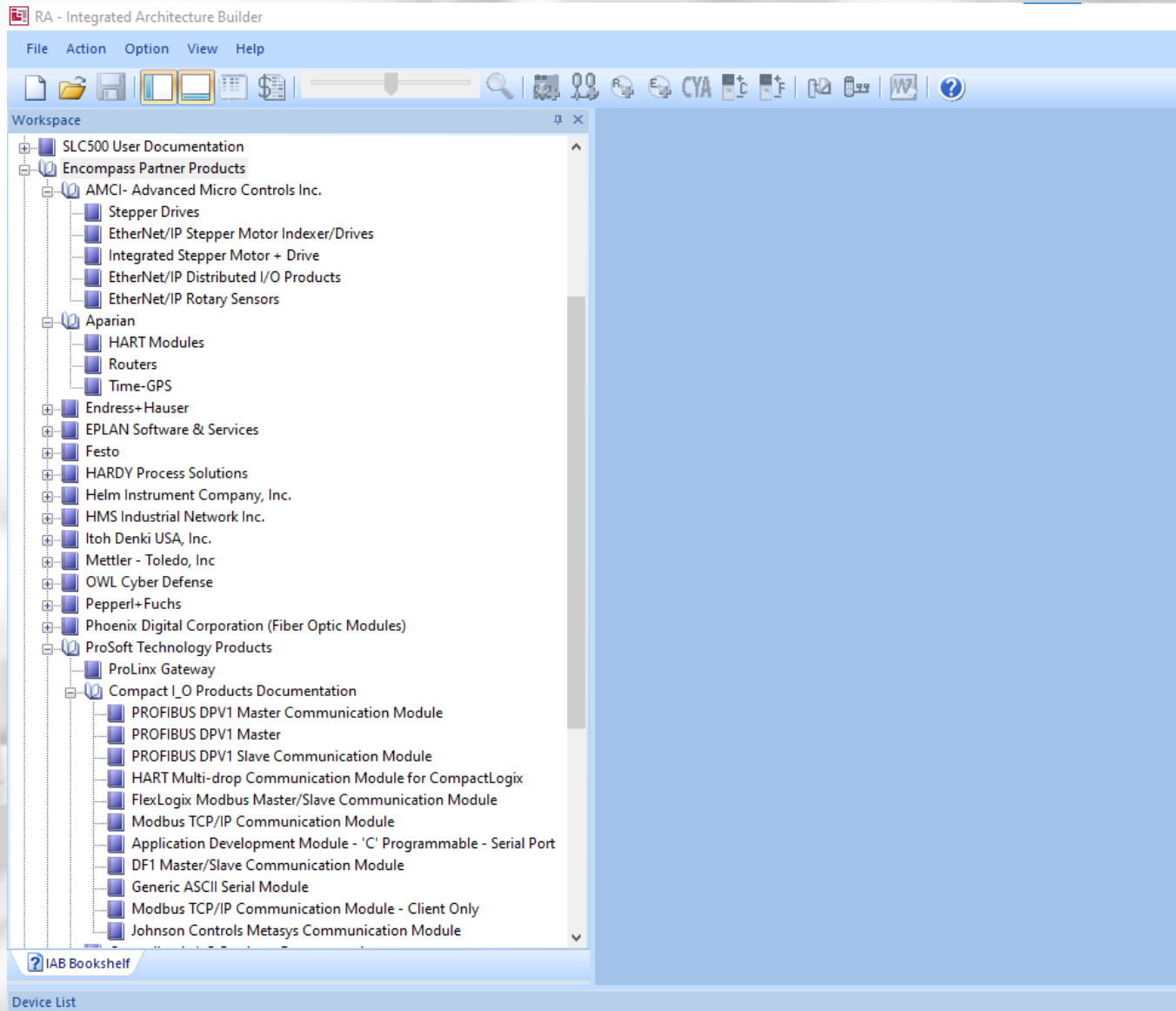
POSLEDNÍCH
PÁR POZNÁMEK

Očekávaný produkt roku 2021

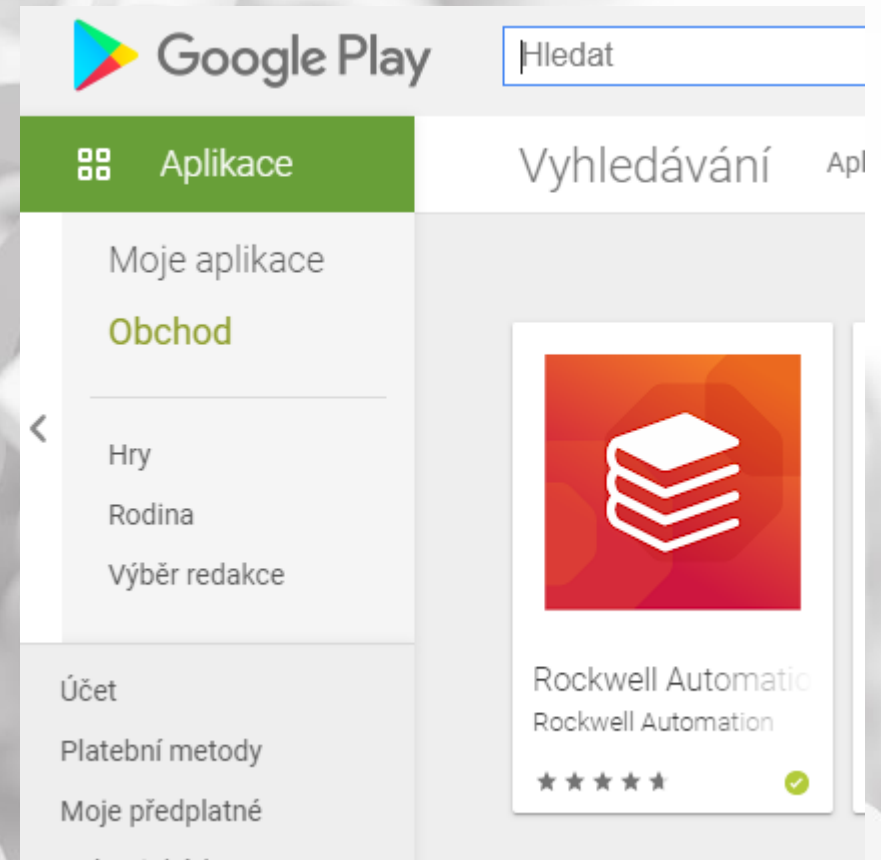
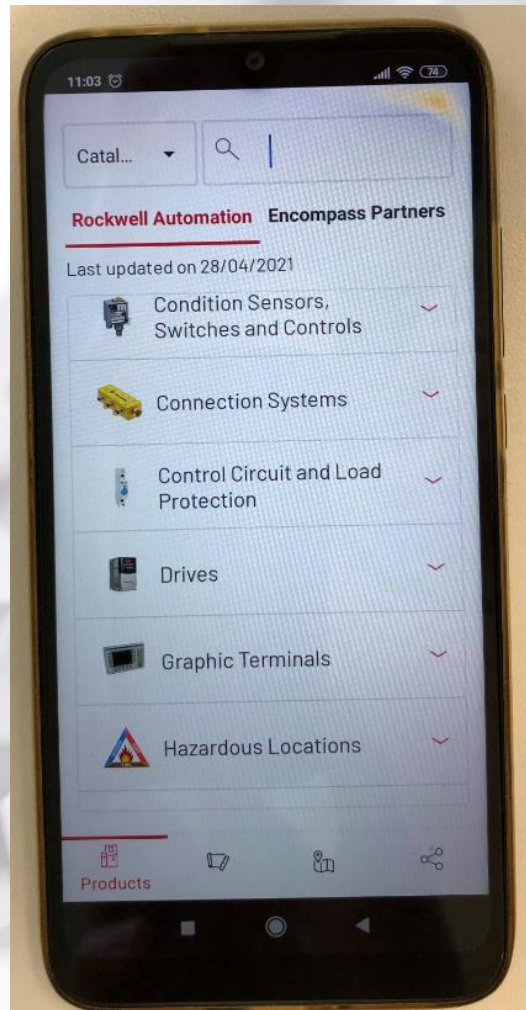
FactoryTalk Logix Echo

Nová generace emulátoru řídicích systémů Logix

ControlTech dodává nejen výrobky Rockwell Automation ale i většinu z produktů od Encompass partnerů obsažených v Integrated Architecture Builderu



Kompletní sortiment Rockwell Automation v mobilním telefonu



- **vestavěné konfigurátory**
- **okamžitá identifikace podle kat. čísla**

Nezbytná pomůcka pro projektanty, obchodníky a servisní pracovníky

**Máte nějaké dotazy ?
Kontaktujte mě, rád odpovím !**

ControlTech



**Authorised
Distributor**

A ROCKWELL AUTOMATION PARTNER

Petr Mikšovský

Product Manager řídicích systémů, sw a terminálů

Mobile: +420 606 722 397

E-mail: pmiksovsky@controltech.cz

ControlTech s.r.o.

Ovčáry 297, 280 02 Ovčáry

www.controltech.cz



**Authorised
Distributor**

A ROCKWELL AUTOMATION PARTNER

